



CATALOG

TEMPERATURE PROBES

APPLICATION RENEWABLE ENERGY

APPLICATION

RENEWABLE ENERGY

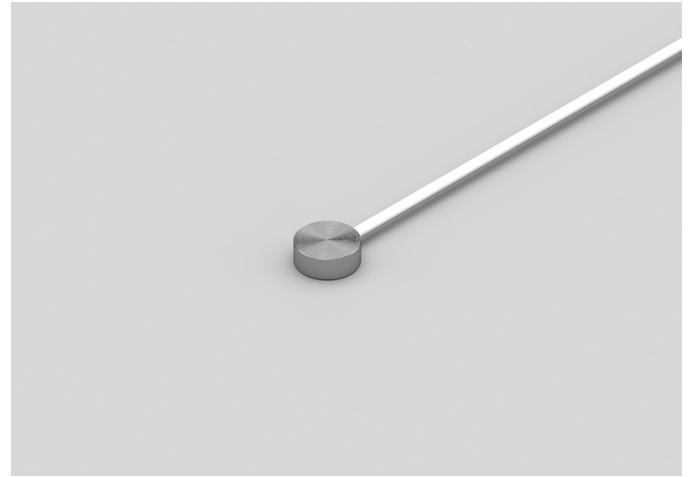
Renewable energy refers to all forms of energy that respect resources from the natural world. They do not pollute and are not depleted as they regenerate at the end of their cycle: solar, wind, geothermal, biomass, hydro and marine energy. The monitoring of temperature and humidity determines the potential performance of plants: in this sense, our products play a key role in measuring these parameters.

CATEGORY

INSTALLATIONS

NTR00C**PROBES WITH CIRCULAR PAD****PRODUCT FAMILY 15CP05**

Contact probe with NTC sensor, in Teflon cable, diameter 12x4.5 mm capsule. Suitable for temperature sensing in heating applications, in the field of renewable energy and in the food field.

**TECHNICAL DATA**

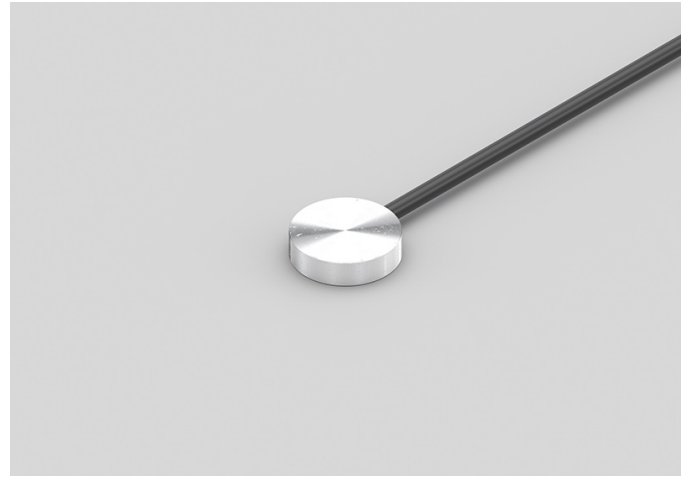
TEMPERATURE RANGE	(0 +120)°C
MODEL	Contact
SENSOR	NTC
CAPSULE	Diameter 12x4.5 mm
CABLE	Teflon
TERMINATIONS	Tin-plated, tips, connectors (other terminations available on request)
RESPONSE TIME	10 s in non-static liquid at 63.2% (depends on configuration)
IDENTIFICATION	Laser on cable, label (customizable)
DECLARATIONS OF CONFORMITY	CE MARKING, CONFLICT MINERALS, REACH, REACH, ROHS

GDX01C

PROBES WITH CIRCULAR PAD

PRODUCT FAMILY 15CP05

Contact probe with PT100 sensor, TPE round cable, diameter 20X5 mm capsule. Suitable for temperature sensing in the field of renewable energy.



TECHNICAL DATA

TEMPERATURE RANGE	(-50 +110)°C
MODEL	Contact
SENSOR	PT100
CAPSULE	Diameter 20X5 mm
CABLE	TPE round
TERMINATIONS	Tin-plated, tips, connectors (other terminations available on request)
RESPONSE TIME	10 s in non-static liquid at 63.2% (depends on configuration)
IDENTIFICATION	Laser on cable, label (customizable)
DECLARATIONS OF CONFORMITY	CE MARKING, CONFLICT MINERALS, REACH, REACH, ROHS

GGR06C

PROBES WITH TAPERED METAL CAPSULE

PRODUCT FAMILY 15CA20

Custom probe with PT100 sensor, in silicone cable, diameter 3x15 mm + pad 10 mm capsule. Suitable for temperature sensing in heating applications, in the field of renewable energy and in the food field.



TECHNICAL DATA

TEMPERATURE RANGE	(-50 +200)°C
MODEL	Custom
SENSOR	PT100
CAPSULE	Diameter 3x15 mm + pad 10 mm
CABLE	Silicone
TERMINATIONS	Tin-plated, tips, connectors (other terminations available on request)
RESPONSE TIME	10 s in non-static liquid at 63.2% (depends on configuration)
IDENTIFICATION	Laser on cable, label (customizable)
DECLARATIONS OF CONFORMITY	CE MARKING, CONFLICT MINERALS, REACH, REACH, ROHS

GPR01C**PROBES WITH TAPERED METAL CAPSULE****PRODUCT FAMILY 15CA20**

Custom probe with PT100 sensor, in PVC cable, diameter 3x15 mm + pad 10 mm capsule. Suitable for temperature sensing in the field of renewable energy.

**TECHNICAL DATA**

TEMPERATURE RANGE	(-30 +105)°C
MODEL	Custom
SENSOR	PT100
CAPSULE	Diameter 3x15 mm + pad 10 mm
CABLE	PVC
TERMINATIONS	Tin-plated, tips, connectors (other terminations available on request)
RESPONSE TIME	10 s in non-static liquid at 63.2% (depends on configuration)
IDENTIFICATION	Laser on cable, label (customizable)
DECLARATIONS OF CONFORMITY	CE MARKING, CONFLICT MINERALS, REACH, REACH, ROHS

GTR01C**PROBES WITH TAPERED METAL CAPSULE****PRODUCT FAMILY 15CA20**

Custom probe with PT100 sensor, in Teflon cable, diameter 3x15 mm + pad 10 mm capsule. Suitable for temperature sensing in refrigeration and air conditioning applications, in heating applications, in the field of renewable energy, in the food field and in the industrial field.

**TECHNICAL DATA**

TEMPERATURE RANGE	(-50 +250)°C
MODEL	Custom
SENSOR	PT100
CAPSULE	Diameter 3x15 mm + pad 10 mm
CABLE	Teflon
TERMINATIONS	Tin-plated, tips, connectors (other terminations available on request)
RESPONSE TIME	10 s in non-static liquid at 63.2% (depends on configuration)
IDENTIFICATION	Laser on cable, label (customizable)
DECLARATIONS OF CONFORMITY	CE MARKING, CONFLICT MINERALS, REACH, REACH, ROHS

GVO02B

EYELET RING PROBES

PRODUCT FAMILY 15C010

Custom probe with PT100 sensor, in glass fibre cable, plate-shaped capsule. Suitable for temperature sensing in heating applications, in the field of renewable energy and in the food field.



TECHNICAL DATA

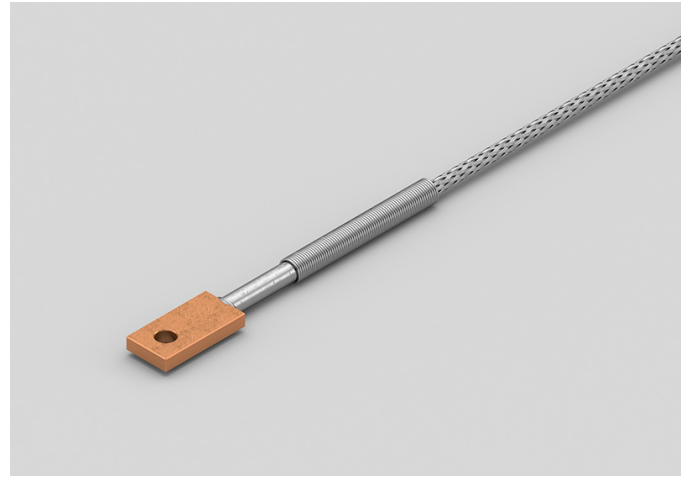
TEMPERATURE RANGE	(0 +250)°C
MODEL	Custom
SENSOR	PT100
CAPSULE	Plate
CABLE	Glass fibre
TERMINATIONS	Tin-plated, tips, connectors (other terminations available on request)
RESPONSE TIME	10 s in non-static liquid at 63.2% (depends on configuration)
IDENTIFICATION	Laser on cable, label (customizable)
DECLARATIONS OF CONFORMITY	CE MARKING, CONFLICT MINERALS, REACH, REACH, ROHS

GVO06C

RECTANGULAR PLATE EYELET PROBES

PRODUCT FAMILY 15C015

Contact probe with PT100 sensor, in glass fibre cable, plate-shaped capsule. Suitable for temperature sensing in heating applications, in the field of renewable energy and in the food field.



TECHNICAL DATA

TEMPERATURE RANGE	(0 +250)°C
MODEL	Contact
SENSOR	PT100
CAPSULE	Plate
CABLE	Glass fibre
TERMINATIONS	Tin-plated, tips, connectors (other terminations available on request)
RESPONSE TIME	10 s in non-static liquid at 63.2% (depends on configuration)
IDENTIFICATION	Laser on cable, label (customizable)
DECLARATIONS OF CONFORMITY	CE MARKING, CONFLICT MINERALS, REACH, REACH, ROHS

GVR06C

PROBES WITH TAPERED METAL CAPSULE

PRODUCT FAMILY 15CA20

Custom probe with PT100 sensor, in glass fibre cable, diameter 3x15 mm + pad 10 mm capsule. Suitable for temperature sensing in heating applications, in the field of renewable energy and in the food field.



TECHNICAL DATA

TEMPERATURE RANGE	(0 +350)°C
MODEL	Custom
SENSOR	PT100
CAPSULE	Diameter 3x15 mm + pad 10 mm
CABLE	Glass fibre
TERMINATIONS	Tin-plated, tips, connectors (other terminations available on request)
RESPONSE TIME	10 s in non-static liquid at 63.2% (depends on configuration)
IDENTIFICATION	Laser on cable, label (customizable)
DECLARATIONS OF CONFORMITY	CE MARKING, CONFLICT MINERALS, REACH, REACH, ROHS

IGR04C

PROBES WITH TAPERED METAL CAPSULE

PRODUCT FAMILY 15CA20

Custom probe with PT1000 sensor, in silicone cable, diameter 3x15 mm + pad 10 mm capsule. Suitable for temperature sensing in heating applications, in the field of renewable energy and in the food field.



TECHNICAL DATA

TEMPERATURE RANGE	(-50 +200)°C
MODEL	Custom
SENSOR	PT1000
CAPSULE	Diameter 3x15 mm + pad 10 mm
CABLE	Silicone
TERMINATIONS	Tin-plated, tips, connectors (other terminations available on request)
RESPONSE TIME	10 s in non-static liquid at 63.2% (depends on configuration)
IDENTIFICATION	Laser on cable, label (customizable)
DECLARATIONS OF CONFORMITY	CE MARKING, CONFLICT MINERALS, REACH, REACH, ROHS

IPR02C

PROBES WITH TAPERED METAL CAPSULE

PRODUCT FAMILY 15CA20

Custom probe with PT1000 sensor, in PVC cable, diameter 3x15 mm + pad 10 mm capsule. Suitable for temperature sensing in the field of renewable energy.



TECHNICAL DATA

TEMPERATURE RANGE	(-30 +105)°C
MODEL	Custom
SENSOR	PT1000
CAPSULE	Diameter 3x15 mm + pad 10 mm
CABLE	PVC
TERMINATIONS	Tin-plated, tips, connectors (other terminations available on request)
RESPONSE TIME	10 s in non-static liquid at 63.2% (depends on configuration)
IDENTIFICATION	Laser on cable, label (customizable)
DECLARATIONS OF CONFORMITY	CE MARKING, CONFLICT MINERALS, REACH, REACH, ROHS

ITR01C

PROBES WITH TAPERED METAL CAPSULE

PRODUCT FAMILY 15CA20

Custom probe with PT1000 sensor, in Teflon cable, diameter 3x15 mm + pad 10 mm capsule. Suitable for temperature sensing in refrigeration and air conditioning applications, in heating applications, in the field of renewable energy, in the food field and in the industrial field.



TECHNICAL DATA

TEMPERATURE RANGE	(-50 +250)°C
MODEL	Custom
SENSOR	PT1000
CAPSULE	Diameter 3x15 mm + pad 10 mm
CABLE	Teflon
TERMINATIONS	Tin-plated, tips, connectors (other terminations available on request)
RESPONSE TIME	10 s in non-static liquid at 63.2% (depends on configuration)
IDENTIFICATION	Laser on cable, label (customizable)
DECLARATIONS OF CONFORMITY	CE MARKING, CONFLICT MINERALS, REACH, REACH, ROHS

IVR02C

PROBES WITH TAPERED METAL CAPSULE

PRODUCT FAMILY 15CA20

Custom probe with PT1000 sensor, in glass fibre cable, diameter 3x15 mm + pad 10 mm capsule. Suitable for temperature sensing in heating applications, in the field of renewable energy and in the food field.



TECHNICAL DATA

TEMPERATURE RANGE	(0 +350)°C
MODEL	Custom
SENSOR	PT1000
CAPSULE	Diameter 3x15 mm + pad 10 mm
CABLE	Glass fibre
TERMINITIONS	Tin-plated, tips, connectors (other terminations available on request)
RESPONSE TIME	10 s in non-static liquid at 63.2% (depends on configuration)
IDENTIFICATION	Laser on cable, label (customizable)
DECLARATIONS OF CONFORMITY	CE MARKING, CONFLICT MINERALS, REACH, REACH, ROHS

CATEGORY

AUTOMATION AND MONITORING SYSTEMS

AEI00C**IP67 COPPER CAPSULE
BRACELET PROBES****PRODUCT FAMILY 30GB10**

Probe with bracelet, PTC sensor, TPE flat cable, 6x6x15 mm + copper plate capsule. Suitable for temperature sensing in refrigeration and air conditioning applications, in air quality control applications, in heating applications and in the field of renewable energy.

**TECHNICAL DATA**

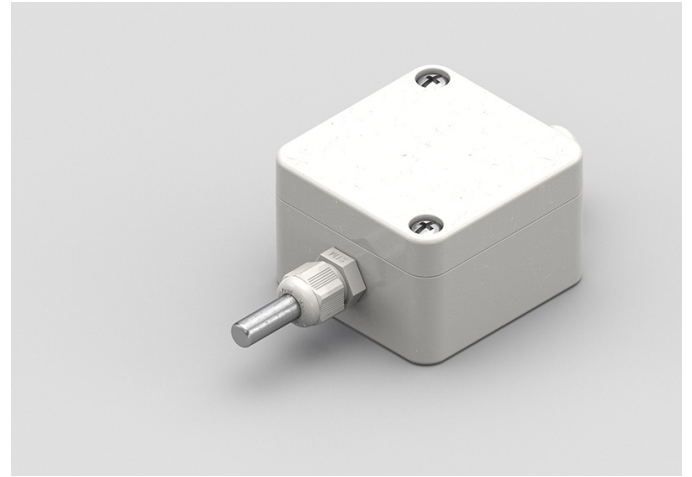
TEMPERATURE RANGE	(-50 +120)°C
MODEL	Bracelet
SENSOR	PTC
CAPSULE	6x6x15 mm + copper plate
CABLE	TPE flat
TERMINATIONS	Tin-plated, tips, connectors (other terminations available on request)
RESPONSE TIME	10 s in non-static liquid at 63.2% (depends on configuration)
IDENTIFICATION	Laser on cable, label (customizable)
DECLARATIONS OF CONFORMITY	CE MARKING, CONFLICT MINERALS, REACH, REACH, ROHS

APB08R

ENVIRONMENTAL PROBES WITH STEEL CAPSULE

PRODUCT FAMILY 50SC05

Custom probe with PTC sensor, in PVC cable, diameter 6x40 mm capsule. Suitable for temperature sensing in refrigeration and air conditioning applications, in air quality control applications, in heating applications, in the field of renewable energy and in the food field.



TECHNICAL DATA

TEMPERATURE RANGE	(-30 +80)°C
MODEL	Custom
SENSOR	PTC
CAPSULE	Diameter 6x40 mm
CABLE	PVC
TERMINATIONS	Tin-plated, tips, connectors (other terminations available on request)
RESPONSE TIME	10 s in non-static liquid at 63.2% (depends on configuration)
IDENTIFICATION	Laser on cable, label (customizable)
DECLARATIONS OF CONFORMITY	CE MARKING, CONFLICT MINERALS, REACH, REACH, ROHS

GEI00C**IP55 COPPER PLATE
BRACELET PROBES****PRODUCT FAMILY 30GB15**

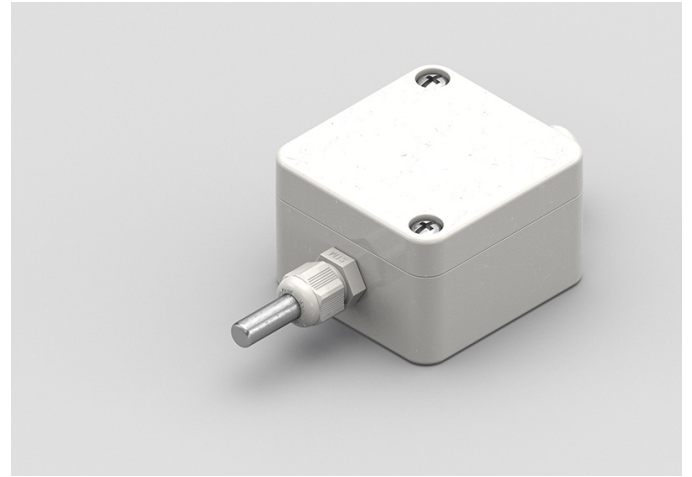
Probe with bracelet, PT100 sensor, TPE flat cable, 6x6x15 mm + copper plate capsule. Suitable for temperature sensing in refrigeration and air conditioning applications, in air quality control applications, in heating applications and in the field of renewable energy.

**TECHNICAL DATA**

TEMPERATURE RANGE	(-50 +120)°C
MODEL	Bracelet
SENSOR	PT100
CAPSULE	6x6x15 mm + copper plate
CABLE	TPE flat
TERMINATIONS	Tin-plated, tips, connectors (other terminations available on request)
RESPONSE TIME	10 s in non-static liquid at 63.2% (depends on configuration)
IDENTIFICATION	Laser on cable, label (customizable)
DECLARATIONS OF CONFORMITY	CE MARKING, CONFLICT MINERALS, REACH, REACH, ROHS

GPB01R**ENVIRONMENTAL
PROBES WITH STEEL
CAPSULE****PRODUCT FAMILY 50SC05**

Custom probe with PT100 sensor, in PVC cable, diameter 6x40 mm capsule. Suitable for temperature sensing in refrigeration and air conditioning applications, in air quality control applications, in heating applications, in the field of renewable energy and in the food field.

**TECHNICAL DATA**

TEMPERATURE RANGE	(-30 +80)°C
MODEL	Custom
SENSOR	PT100
CAPSULE	Diameter 6x40 mm
CABLE	PVC
TERMINATIONS	Tin-plated, tips, connectors (other terminations available on request)
RESPONSE TIME	10 s in non-static liquid at 63.2% (depends on configuration)
IDENTIFICATION	Laser on cable, label (customizable)
DECLARATIONS OF CONFORMITY	CE MARKING, CONFLICT MINERALS, REACH, REACH, ROHS

IEI03C**IP55 COPPER PLATE
BRACELET PROBES****PRODUCT FAMILY 30GB15**

Probe with bracelet, PT1000 sensor, TPE flat cable, 6x6x15 mm + copper plate capsule. Suitable for temperature sensing in refrigeration and air conditioning applications, in air quality control applications, in heating applications and in the field of renewable energy.

**TECHNICAL DATA**

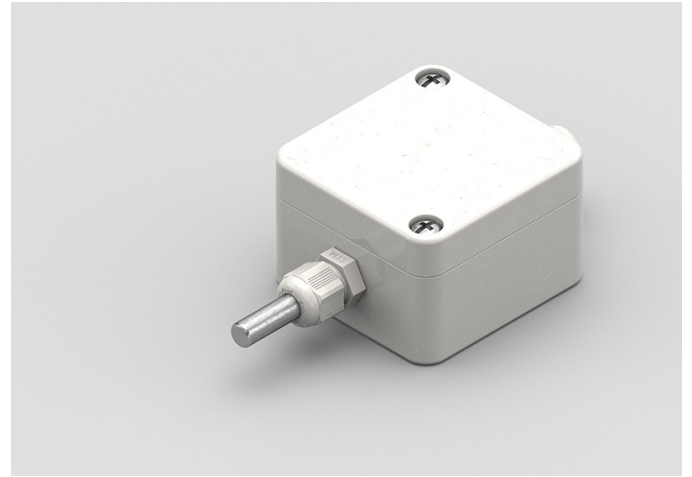
TEMPERATURE RANGE	(-50 +120)°C
MODEL	Bracelet
SENSOR	PT1000
CAPSULE	6x6x15 mm + copper plate
CABLE	TPE flat
TERMINATIONS	Tin-plated, tips, connectors (other terminations available on request)
RESPONSE TIME	10 s in non-static liquid at 63.2% (depends on configuration)
IDENTIFICATION	Laser on cable, label (customizable)
DECLARATIONS OF CONFORMITY	CE MARKING, CONFLICT MINERALS, REACH, REACH, ROHS

IPB03R

ENVIRONMENTAL PROBES WITH STEEL CAPSULE

PRODUCT FAMILY 50SC05

Custom probe with PT1000 sensor, in PVC cable, diameter 6x40 mm capsule. Suitable for temperature sensing in refrigeration and air conditioning applications, in air quality control applications, in heating applications, in the field of renewable energy and in the food field.



TECHNICAL DATA

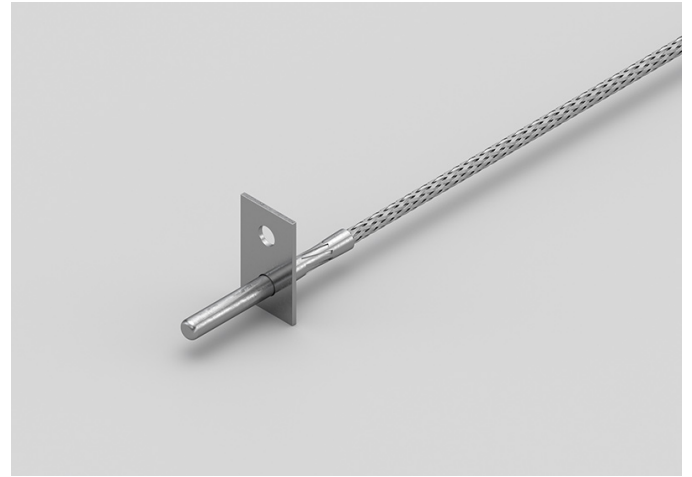
TEMPERATURE RANGE	(-30 +80)°C
MODEL	Custom
SENSOR	PT1000
CAPSULE	Diameter 6x40 mm
CABLE	PVC
TERMINATIONS	Tin-plated, tips, connectors (other terminations available on request)
RESPONSE TIME	10 s in non-static liquid at 63.2% (depends on configuration)
IDENTIFICATION	Laser on cable, label (customizable)
DECLARATIONS OF CONFORMITY	CE MARKING, CONFLICT MINERALS, REACH, REACH, ROHS

IVU00C

METAL CAPSULE PROBES WITH FLANGE

PRODUCT FAMILY 15CA25

Contact probe with PT1000 sensor, in glass fibre cable, diameter 4x40 mm capsule. Suitable for temperature sensing in refrigeration and air conditioning applications, in air quality control applications, in heating applications, in the field of renewable energy and in the food field.

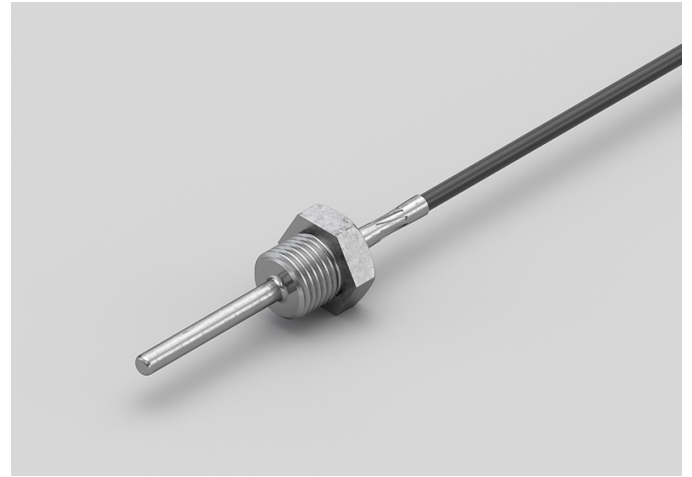


TECHNICAL DATA

TEMPERATURE RANGE	(0 +350)°C
MODEL	Contact
SENSOR	PT1000
CAPSULE	Diameter 4x40 mm
CABLE	Glass fibre
TERMINITIONS	Tin-plated, tips, connectors (other terminations available on request)
RESPONSE TIME	10 s in non-static liquid at 63.2% (depends on configuration)
IDENTIFICATION	Laser on cable, label (customizable)
DECLARATIONS OF CONFORMITY	CE MARKING, CONFLICT MINERALS, REACH, REACH, ROHS

NDM01C**PROBES WITH WELDED
THREADED CONNECTION****PRODUCT FAMILY 15CR05**

Probe with connector, NTC sensor, TPE round cable, diameter 4x40 mm capsule. Suitable for temperature sensing in laboratory equipment and machinery, in refrigeration and air conditioning applications, in air quality control applications, in heating applications, in the field of renewable energy and in the food field.

**TECHNICAL DATA**

TEMPERATURE RANGE	(-50 +110)°C
MODEL	With connector
SENSOR	NTC
CAPSULE	Diameter 4x40 mm
CABLE	TPE round
TERMINATIONS	Tin-plated, tips, connectors (other terminations available on request)
RESPONSE TIME	10 s in non-static liquid at 63.2% (depends on configuration)
IDENTIFICATION	Laser on cable, label (customizable)
DECLARATIONS OF CONFORMITY	CE MARKING, CONFLICT MINERALS, REACH, REACH, ROHS

NDU01C

PROBES WITH FAST METAL CAPSULE

PRODUCT FAMILY 15CA10

Probe with steel capsule, NTC sensor, TPE round cable, diameter 4x40 mm capsule. Suitable for temperature sensing in refrigeration and air conditioning applications, in air quality control applications, in heating applications, in the field of renewable energy and in the food field.



TECHNICAL DATA

TEMPERATURE RANGE	(-50 +110)°C
MODEL	Steel capsule
SENSOR	NTC
CAPSULE	Diameter 4x40 mm
CABLE	TPE round
TERMINATIONS	Tin-plated, tips, connectors (other terminations available on request)
RESPONSE TIME	10 s in non-static liquid at 63.2% (depends on configuration)
IDENTIFICATION	Laser on cable, label (customizable)
DECLARATIONS OF CONFORMITY	CE MARKING, CONFLICT MINERALS, MOCA, REACH, REACH, ROHS

NEI01C**IP55 COPPER PLATE
BRACELET PROBES****PRODUCT FAMILY 30GB15**

Probe with bracelet, NTC sensor, TPE flat cable, 6x6x15 mm + copper plate capsule. Suitable for temperature sensing in refrigeration and air conditioning applications, in air quality control applications, in heating applications and in the field of renewable energy.

**TECHNICAL DATA**

TEMPERATURE RANGE	(-50 +120)°C
MODEL	Bracelet
SENSOR	NTC
CAPSULE	6x6x15 mm + copper plate
CABLE	TPE flat
TERMINATIONS	Tin-plated, tips, connectors (other terminations available on request)
RESPONSE TIME	10 s in non-static liquid at 63.2% (depends on configuration)
IDENTIFICATION	Laser on cable, label (customizable)
DECLARATIONS OF CONFORMITY	CE MARKING, CONFLICT MINERALS, REACH, REACH, ROHS

NEX02R**PROBES WITH SINGLE-ISOLATION EXPOSED SENSOR****PRODUCT FAMILY 10EP05**

Probe with exposed sensor, NTC sensor, TPE flat cable, without capsule capsule. Suitable for temperature sensing in the field of renewable energy.

**TECHNICAL DATA**

TEMPERATURE RANGE	(0 +120)°C
MODEL	Exposed sensor
SENSOR	NTC
CAPSULE	Without capsule
CABLE	TPE flat
TERMINITIONS	Tin-plated, tips, connectors (other terminations available on request)
RESPONSE TIME	10 s in non-static liquid at 63.2% (depends on configuration)
IDENTIFICATION	Laser on cable, label (customizable)
DECLARATIONS OF CONFORMITY	CE MARKING, CONFLICT MINERALS, REACH, REACH, ROHS

NEX04R**PROBES WITH SINGLE-ISOLATION EXPOSED SENSOR****PRODUCT FAMILY 10EP05**

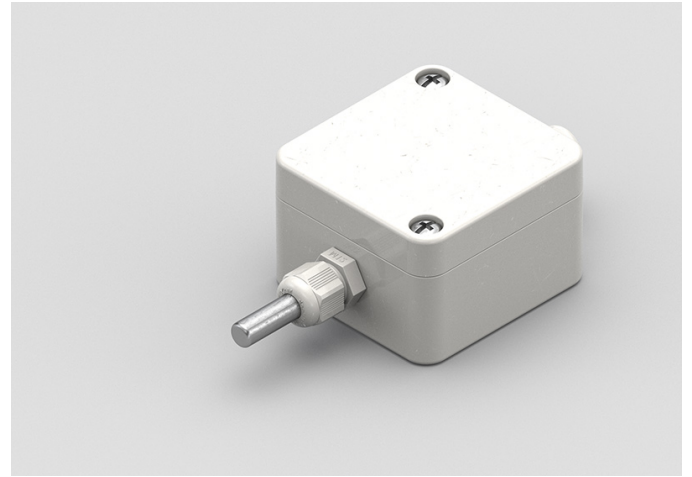
Probe with exposed sensor, NTC sensor, TPE flat cable, without capsule capsule. Suitable for temperature sensing in the field of renewable energy.

**TECHNICAL DATA**

TEMPERATURE RANGE	(0 +100)°C
MODEL	Exposed sensor
SENSOR	NTC
CAPSULE	Without capsule
CABLE	TPE flat
TERMINITIONS	Tin-plated, tips, connectors (other terminations available on request)
RESPONSE TIME	10 s in non-static liquid at 63.2% (depends on configuration)
IDENTIFICATION	Laser on cable, label (customizable)
DECLARATIONS OF CONFORMITY	CE MARKING, CONFLICT MINERALS, REACH, REACH, ROHS

NPB13R**ENVIRONMENTAL
PROBES WITH STEEL
CAPSULE****PRODUCT FAMILY 50SC05**

Custom probe with NTC sensor, in PVC cable, diameter 6x40 mm capsule. Suitable for temperature sensing in refrigeration and air conditioning applications, in air quality control applications, in heating applications, in the field of renewable energy and in the food field.

**TECHNICAL DATA**

TEMPERATURE RANGE	(-30 +80)°C
MODEL	Custom
SENSOR	NTC
CAPSULE	Diameter 6x40 mm
CABLE	PVC
TERMINATIONS	Tin-plated, tips, connectors (other terminations available on request)
RESPONSE TIME	10 s in non-static liquid at 63.2% (depends on configuration)
IDENTIFICATION	Laser on cable, label (customizable)
DECLARATIONS OF CONFORMITY	CE MARKING, CONFLICT MINERALS, REACH, REACH, ROHS

RVU00C

PROBES WITH FAST METAL CAPSULE

PRODUCT FAMILY 15CA10

Probe with steel capsule, NTC sensor, in glass fibre cable, diameter 4x40 mm capsule. Suitable for temperature sensing in refrigeration and air conditioning applications, in air quality control applications, in heating applications, in the field of renewable energy and in the food field.



TECHNICAL DATA

TEMPERATURE RANGE	(0 +300)°C
MODEL	Steel capsule
SENSOR	NTC
CAPSULE	Diameter 4x40 mm
CABLE	Glass fibre
TERMINITIONS	Tin-plated, tips, connectors (other terminations available on request)
RESPONSE TIME	10 s in non-static liquid at 63.2% (depends on configuration)
IDENTIFICATION	Laser on cable, label (customizable)
DECLARATIONS OF CONFORMITY	CE MARKING, CONFLICT MINERALS, MOCA, REACH, REACH, ROHS

ADM00C

PROBES WITH SLIDING THREADED CONNECTION

PRODUCT FAMILY 15CR10

Probe with connector, PTC sensor, TPE round cable, diameter 4x40 mm capsule. Suitable for temperature sensing in laboratory equipment and machinery, in refrigeration and air conditioning applications, in air quality control applications, in heating applications, in the field of renewable energy and in the food field.



TECHNICAL DATA

TEMPERATURE RANGE	(-50 +110)°C
MODEL	With connector
SENSOR	PTC
CAPSULE	Diameter 4x40 mm
CABLE	TPE round
TERMINATIONS	Tin-plated, tips, connectors (other terminations available on request)
RESPONSE TIME	10 s in non-static liquid at 63.2% (depends on configuration)
IDENTIFICATION	Laser on cable, label (customizable)
DECLARATIONS OF CONFORMITY	CE MARKING, CONFLICT MINERALS, REACH, REACH, ROHS

ADM01C**PROBES WITH WELDED
THREADED CONNECTION****PRODUCT FAMILY 15CR05**

Probe with connector, PTC sensor, TPE round cable, diameter 4x40 mm capsule. Suitable for temperature sensing in laboratory equipment and machinery, in refrigeration and air conditioning applications, in air quality control applications, in heating applications, in the field of renewable energy and in the food field.

**TECHNICAL DATA**

TEMPERATURE RANGE	(-50 +110)°C
MODEL	With connector
SENSOR	PTC
CAPSULE	Diameter 4x40 mm
CABLE	TPE round
TERMINATIONS	Tin-plated, tips, connectors (other terminations available on request)
RESPONSE TIME	10 s in non-static liquid at 63.2% (depends on configuration)
IDENTIFICATION	Laser on cable, label (customizable)
DECLARATIONS OF CONFORMITY	CE MARKING, CONFLICT MINERALS, REACH, REACH, ROHS

ADU06C

PROBES WITH FAST METAL CAPSULE

PRODUCT FAMILY 15CA10

Probe with steel capsule, PTC sensor, TPE round cable, diameter 4x40 mm capsule. Suitable for temperature sensing in refrigeration and air conditioning applications, in air quality control applications, in heating applications, in the field of renewable energy and in the food field.

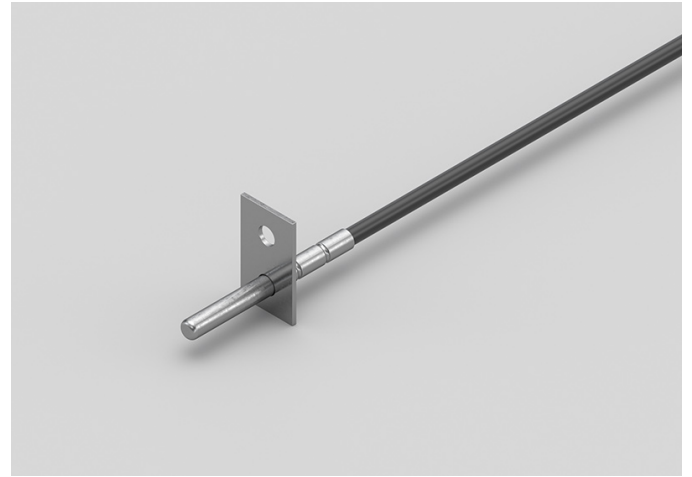


TECHNICAL DATA

TEMPERATURE RANGE	(-50 +110)°C
MODEL	Steel capsule
SENSOR	PTC
CAPSULE	Diameter 4x40 mm
CABLE	TPE round
TERMINITIONS	Tin-plated, tips, connectors (other terminations available on request)
RESPONSE TIME	10 s in non-static liquid at 63.2% (depends on configuration)
IDENTIFICATION	Laser on cable, label (customizable)
DECLARATIONS OF CONFORMITY	CE MARKING, CONFLICT MINERALS, MOCA, REACH, REACH, ROHS

ADU07C**METAL CAPSULE PROBES
WITH FLANGE****PRODUCT FAMILY 15CA25**

Contact probe with PTC sensor, TPE round cable, diameter 4x40 mm capsule. Suitable for temperature sensing in refrigeration and air conditioning applications, in air quality control applications, in heating applications, in the field of renewable energy and in the food field.

**TECHNICAL DATA**

TEMPERATURE RANGE	(-50 +110)°C
MODEL	Contact
SENSOR	PTC
CAPSULE	Diameter 4x40 mm
CABLE	TPE round
TERMINITIONS	Tin-plated, tips, connectors (other terminations available on request)
RESPONSE TIME	10 s in non-static liquid at 63.2% (depends on configuration)
IDENTIFICATION	Laser on cable, label (customizable)
DECLARATIONS OF CONFORMITY	CE MARKING, CONFLICT MINERALS, REACH, REACH, ROHS

ADU08C

METAL CAPSULE PROBES WITH FLANGE

PRODUCT FAMILY 15CA25

Contact probe with PTC sensor, TPE round cable, diameter 4x40 mm capsule. Suitable for temperature sensing in refrigeration and air conditioning applications, in air quality control applications, in heating applications, in the field of renewable energy and in the food field.

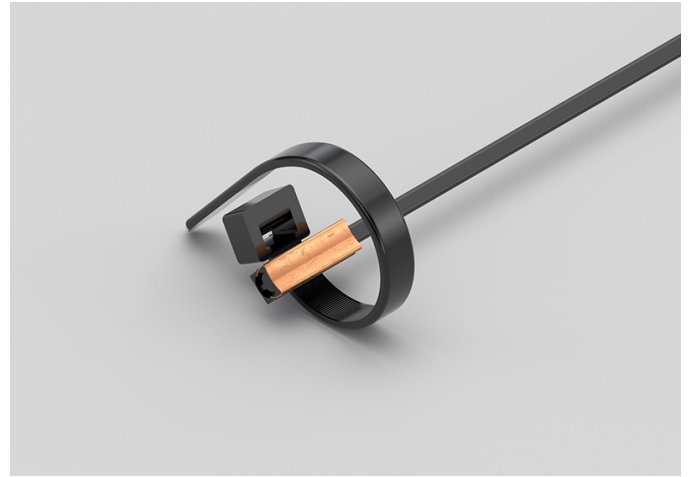


TECHNICAL DATA

TEMPERATURE RANGE	(-50 +110)°C
MODEL	Contact
SENSOR	PTC
CAPSULE	Diameter 4x40 mm
CABLE	TPE round
TERMINATIONS	Tin-plated, tips, connectors (other terminations available on request)
RESPONSE TIME	10 s in non-static liquid at 63.2% (depends on configuration)
IDENTIFICATION	Laser on cable, label (customizable)
DECLARATIONS OF CONFORMITY	CE MARKING, CONFLICT MINERALS, REACH, REACH, ROHS

AEI04C**IP55 COPPER PLATE
BRACELET PROBES****PRODUCT FAMILY 30GB15**

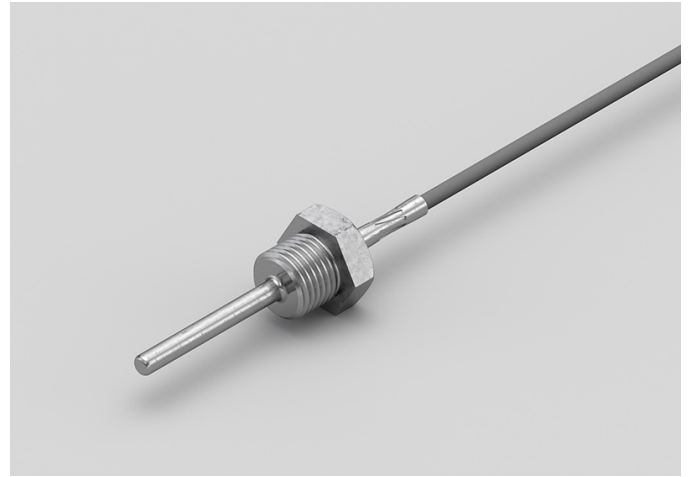
Probe with bracelet, PTC sensor, TPE flat cable, 6x6x15 mm + copper plate capsule. Suitable for temperature sensing in refrigeration and air conditioning applications, in air quality control applications, in heating applications and in the field of renewable energy.

**TECHNICAL DATA**

TEMPERATURE RANGE	(-50 +120)°C
MODEL	Bracelet
SENSOR	PTC
CAPSULE	6x6x15 mm + copper plate
CABLE	TPE flat
TERMINATIONS	Tin-plated, tips, connectors (other terminations available on request)
RESPONSE TIME	10 s in non-static liquid at 63.2% (depends on configuration)
IDENTIFICATION	Laser on cable, label (customizable)
DECLARATIONS OF CONFORMITY	CE MARKING, CONFLICT MINERALS, REACH, REACH, ROHS

AGM03C**PROBES WITH WELDED
THREADED CONNECTION****PRODUCT FAMILY 15CR05**

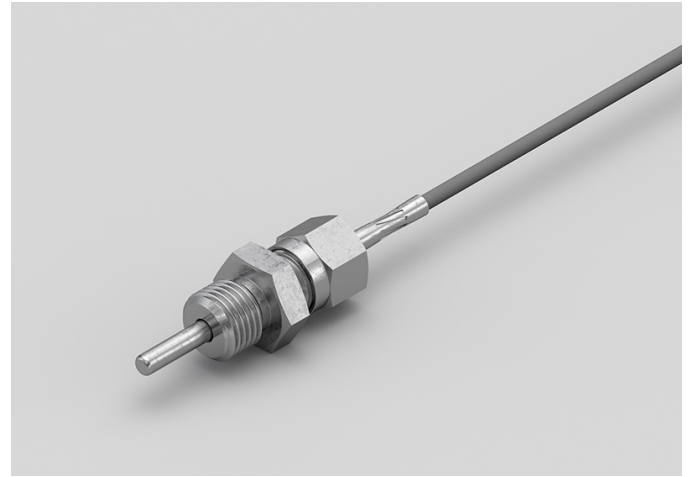
Probe with connector, PTC sensor, in silicone cable, diameter 4x40 mm capsule. Suitable for temperature sensing in laboratory equipment and machinery, in refrigeration and air conditioning applications, in air quality control applications, in heating applications, in the field of renewable energy and in the food field.

**TECHNICAL DATA**

TEMPERATURE RANGE	(-50 +150)°C
MODEL	With connector
SENSOR	PTC
CAPSULE	Diameter 4x40 mm
CABLE	Silicone
TERMINATIONS	Tin-plated, tips, connectors (other terminations available on request)
RESPONSE TIME	10 s in non-static liquid at 63.2% (depends on configuration)
IDENTIFICATION	Laser on cable, label (customizable)
DECLARATIONS OF CONFORMITY	CE MARKING, CONFLICT MINERALS, REACH, REACH, ROHS

AGM04C**PROBES WITH SLIDING
THREADED CONNECTION****PRODUCT FAMILY 15CR10**

Probe with connector, PTC sensor, in silicone cable, diameter 4x40 mm capsule. Suitable for temperature sensing in laboratory equipment and machinery, in refrigeration and air conditioning applications, in air quality control applications, in heating applications, in the field of renewable energy and in the food field.

**TECHNICAL DATA**

TEMPERATURE RANGE	(-50 +150)°C
MODEL	With connector
SENSOR	PTC
CAPSULE	Diameter 4x40 mm
CABLE	Silicone
TERMINATIONS	Tin-plated, tips, connectors (other terminations available on request)
RESPONSE TIME	10 s in non-static liquid at 63.2% (depends on configuration)
IDENTIFICATION	Laser on cable, label (customizable)
DECLARATIONS OF CONFORMITY	CE MARKING, CONFLICT MINERALS, REACH, REACH, ROHS

AGU01C**STANDARD EYELET PROBES****PRODUCT FAMILY 15C005**

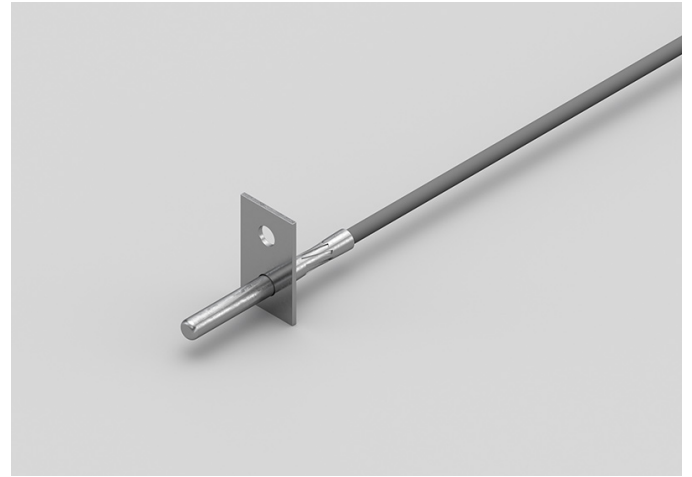
Contact probe with PTC sensor, in silicone cable, diameter 4x40 mm capsule. Suitable for temperature sensing in refrigeration and air conditioning applications, in air quality control applications, in heating applications, in the field of renewable energy and in the food field.

**TECHNICAL DATA**

TEMPERATURE RANGE	(-50 +150)°C
MODEL	Contact
SENSOR	PTC
CAPSULE	Diameter 4x40 mm
CABLE	Silicone
TERMINATIONS	Tin-plated, tips, connectors (other terminations available on request)
RESPONSE TIME	10 s in non-static liquid at 63.2% (depends on configuration)
IDENTIFICATION	Laser on cable, label (customizable)
DECLARATIONS OF CONFORMITY	CE MARKING, CONFLICT MINERALS, REACH, REACH, ROHS

AGU02C**METAL CAPSULE PROBES
WITH FLANGE****PRODUCT FAMILY 15CA25**

Contact probe with PTC sensor, in silicone cable, diameter 4x40 mm capsule. Suitable for temperature sensing in refrigeration and air conditioning applications, in air quality control applications, in heating applications, in the field of renewable energy and in the food field.

**TECHNICAL DATA**

TEMPERATURE RANGE	(-50 +150)°C
MODEL	Contact
SENSOR	PTC
CAPSULE	Diameter 4x40 mm
CABLE	Silicone
TERMINITIONS	Tin-plated, tips, connectors (other terminations available on request)
RESPONSE TIME	10 s in non-static liquid at 63.2% (depends on configuration)
IDENTIFICATION	Laser on cable, label (customizable)
DECLARATIONS OF CONFORMITY	CE MARKING, CONFLICT MINERALS, REACH, REACH, ROHS

AGU04C

PROBES WITH FAST METAL CAPSULE

PRODUCT FAMILY 15CA10

Probe with steel capsule, PTC sensor, in silicone cable, diameter 4x40 mm capsule. Suitable for temperature sensing in refrigeration and air conditioning applications, in air quality control applications, in heating applications, in the field of renewable energy and in the food field.



TECHNICAL DATA

TEMPERATURE RANGE	(-50 +150)°C
MODEL	Steel capsule
SENSOR	PTC
CAPSULE	Diameter 4x40 mm
CABLE	Silicone
TERMINITIONS	Tin-plated, tips, connectors (other terminations available on request)
RESPONSE TIME	10 s in non-static liquid at 63.2% (depends on configuration)
IDENTIFICATION	Laser on cable, label (customizable)
DECLARATIONS OF CONFORMITY	CE MARKING, CONFLICT MINERALS, MOCA, REACH, REACH, ROHS

APG04R

ENVIRONMENTAL PROBES WITH STEEL CAPSULE

PRODUCT FAMILY 50SC05

Environment probe with PTC sensor, in PVC cable, diameter 6X100 mm capsule. Suitable for temperature sensing in refrigeration and air conditioning applications, in air quality control applications, in heating applications, in the field of renewable energy and in the food field.



TECHNICAL DATA

TEMPERATURE RANGE	(0 +70)°C
MODEL	Environment
SENSOR	PTC
CAPSULE	Diameter 6X100 mm
CABLE	PVC
TERMINATIONS	Tin-plated, tips, connectors (other terminations available on request)
RESPONSE TIME	10 s in non-static liquid at 63.2% (depends on configuration)
IDENTIFICATION	Laser on cable, label (customizable)
DECLARATIONS OF CONFORMITY	CE MARKING, CONFLICT MINERALS, REACH, REACH, ROHS

APM01C**PROBES WITH WELDED
THREADED CONNECTION****PRODUCT FAMILY 15CR05**

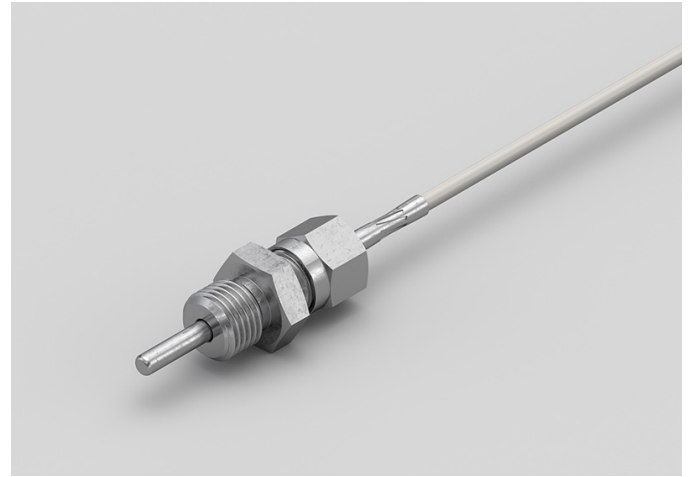
Probe with connector, PTC sensor, in PVC cable, diameter 4x40 mm capsule. Suitable for temperature sensing in laboratory equipment and machinery, in refrigeration and air conditioning applications, in air quality control applications, in heating applications, in the field of renewable energy and in the food field.

**TECHNICAL DATA**

TEMPERATURE RANGE	(-30 +80)°C
MODEL	With connector
SENSOR	PTC
CAPSULE	Diameter 4x40 mm
CABLE	PVC
TERMINATIONS	Tin-plated, tips, connectors (other terminations available on request)
RESPONSE TIME	10 s in non-static liquid at 63.2% (depends on configuration)
IDENTIFICATION	Laser on cable, label (customizable)
DECLARATIONS OF CONFORMITY	CE MARKING, CONFLICT MINERALS, REACH, REACH, ROHS

APM04C**PROBES WITH SLIDING
THREADED CONNECTION****PRODUCT FAMILY 15CR10**

Probe with connector, PTC sensor, in PVC cable, diameter 4x40 mm capsule. Suitable for temperature sensing in laboratory equipment and machinery, in refrigeration and air conditioning applications, in air quality control applications, in heating applications, in the field of renewable energy and in the food field.

**TECHNICAL DATA**

TEMPERATURE RANGE	(-30 +80)°C
MODEL	With connector
SENSOR	PTC
CAPSULE	Diameter 4x40 mm
CABLE	PVC
TERMINATIONS	Tin-plated, tips, connectors (other terminations available on request)
RESPONSE TIME	10 s in non-static liquid at 63.2% (depends on configuration)
IDENTIFICATION	Laser on cable, label (customizable)
DECLARATIONS OF CONFORMITY	CE MARKING, CONFLICT MINERALS, REACH, REACH, ROHS

APU01C**STANDARD EYELET PROBES****PRODUCT FAMILY 15C005**

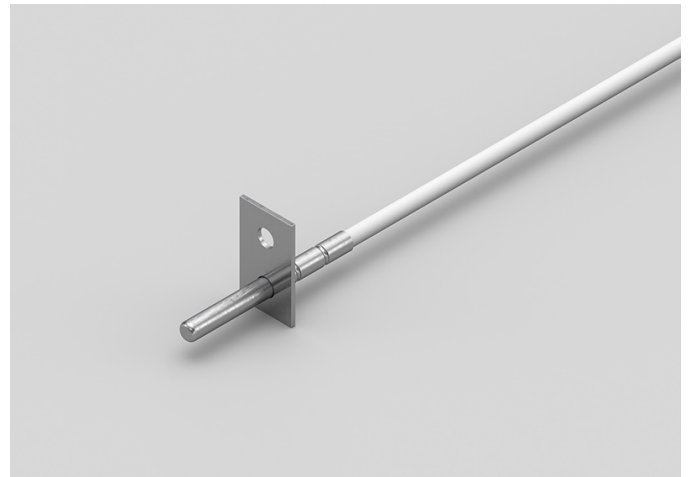
Contact probe with PTC sensor, in PVC cable, diameter 4x40 mm capsule. Suitable for temperature sensing in refrigeration and air conditioning applications, in air quality control applications, in heating applications, in the field of renewable energy and in the food field.

**TECHNICAL DATA**

TEMPERATURE RANGE	(-30 +80)°C
MODEL	Contact
SENSOR	PTC
CAPSULE	Diameter 4x40 mm
CABLE	PVC
TERMINATIONS	Tin-plated, tips, connectors (other terminations available on request)
RESPONSE TIME	10 s in non-static liquid at 63.2% (depends on configuration)
IDENTIFICATION	Laser on cable, label (customizable)
DECLARATIONS OF CONFORMITY	CE MARKING, CONFLICT MINERALS, REACH, REACH, ROHS

APU02C**METAL CAPSULE PROBES
WITH FLANGE****PRODUCT FAMILY 15CA25**

Contact probe with PTC sensor, in PVC cable, diameter 4x40 mm capsule. Suitable for temperature sensing in refrigeration and air conditioning applications, in air quality control applications, in heating applications, in the field of renewable energy and in the food field.

**TECHNICAL DATA**

TEMPERATURE RANGE	(-30 +80)°C
MODEL	Contact
SENSOR	PTC
CAPSULE	Diameter 4x40 mm
CABLE	PVC
TERMINATIONS	Tin-plated, tips, connectors (other terminations available on request)
RESPONSE TIME	10 s in non-static liquid at 63.2% (depends on configuration)
IDENTIFICATION	Laser on cable, label (customizable)
DECLARATIONS OF CONFORMITY	CE MARKING, CONFLICT MINERALS, REACH, REACH, ROHS

APU03C**PROBES WITH FAST METAL CAPSULE****PRODUCT FAMILY 15CA10**

Probe with steel capsule, PTC sensor, in PVC cable, diameter 4x40 mm capsule. Suitable for temperature sensing in refrigeration and air conditioning applications, in air quality control applications, in heating applications, in the field of renewable energy and in the food field.

**TECHNICAL DATA**

TEMPERATURE RANGE	(-30 +80)°C
MODEL	Steel capsule
SENSOR	PTC
CAPSULE	Diameter 4x40 mm
CABLE	PVC
TERMINITIONS	Tin-plated, tips, connectors (other terminations available on request)
RESPONSE TIME	10 s in non-static liquid at 63.2% (depends on configuration)
IDENTIFICATION	Laser on cable, label (customizable)
DECLARATIONS OF CONFORMITY	CE MARKING, CONFLICT MINERALS, MOCA, REACH, REACH, ROHS

GDM00C

PROBES WITH WELDED THREADED CONNECTION

PRODUCT FAMILY 15CR05

Probe with connector, PT100 sensor, TPE round cable, diameter 4x40 mm capsule. Suitable for temperature sensing in laboratory equipment and machinery, in refrigeration and air conditioning applications, in air quality control applications, in heating applications, in the field of renewable energy and in the food field.

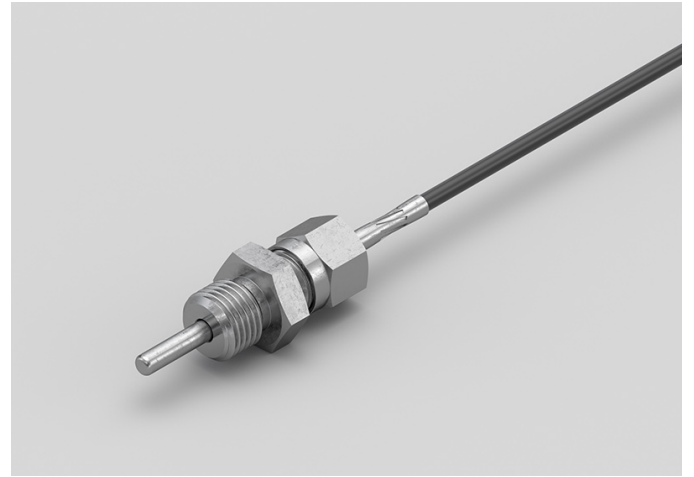


TECHNICAL DATA

TEMPERATURE RANGE	(-50 +110)°C
MODEL	With connector
SENSOR	PT100
CAPSULE	Diameter 4x40 mm
CABLE	TPE round
TERMINATIONS	Tin-plated, tips, connectors (other terminations available on request)
RESPONSE TIME	10 s in non-static liquid at 63.2% (depends on configuration)
IDENTIFICATION	Laser on cable, label (customizable)
DECLARATIONS OF CONFORMITY	CE MARKING, CONFLICT MINERALS, REACH, REACH, ROHS

GDM01C**PROBES WITH SLIDING
THREADED CONNECTION****PRODUCT FAMILY 15CR10**

Probe with connector, PT100 sensor, TPE round cable, diameter 4x40 mm capsule. Suitable for temperature sensing in laboratory equipment and machinery, in refrigeration and air conditioning applications, in air quality control applications, in heating applications, in the field of renewable energy and in the food field.

**TECHNICAL DATA**

TEMPERATURE RANGE	(-50 +110)°C
MODEL	With connector
SENSOR	PT100
CAPSULE	Diameter 4x40 mm
CABLE	TPE round
TERMINATIONS	Tin-plated, tips, connectors (other terminations available on request)
RESPONSE TIME	10 s in non-static liquid at 63.2% (depends on configuration)
IDENTIFICATION	Laser on cable, label (customizable)
DECLARATIONS OF CONFORMITY	CE MARKING, CONFLICT MINERALS, REACH, REACH, ROHS

GDU02C**STANDARD EYELET PROBES****PRODUCT FAMILY 15C005**

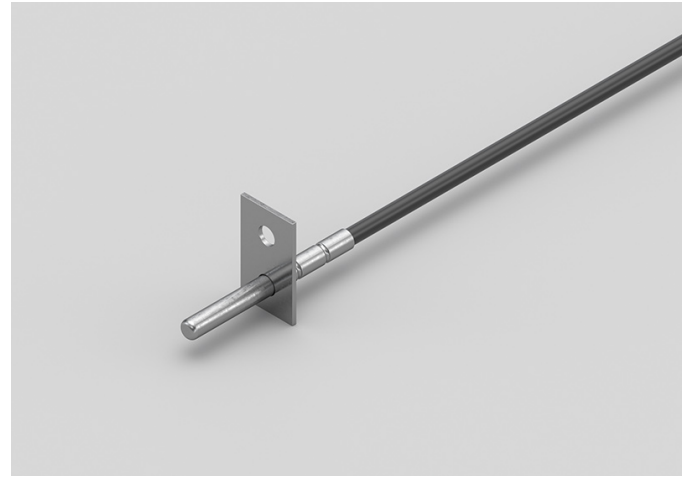
Contact probe with PT100 sensor, TPE round cable, diameter 4x40 mm capsule. Suitable for temperature sensing in refrigeration and air conditioning applications, in air quality control applications, in heating applications, in the field of renewable energy and in the food field.

**TECHNICAL DATA**

TEMPERATURE RANGE	(-50 +110)°C
MODEL	Contact
SENSOR	PT100
CAPSULE	Diameter 4x40 mm
CABLE	TPE round
TERMINATIONS	Tin-plated, tips, connectors (other terminations available on request)
RESPONSE TIME	10 s in non-static liquid at 63.2% (depends on configuration)
IDENTIFICATION	Laser on cable, label (customizable)
DECLARATIONS OF CONFORMITY	CE MARKING, CONFLICT MINERALS, REACH, REACH, ROHS

GDU03C**METAL CAPSULE PROBES
WITH FLANGE****PRODUCT FAMILY 15CA25**

Contact probe with PT100 sensor, TPE round cable, diameter 4x40 mm capsule. Suitable for temperature sensing in refrigeration and air conditioning applications, in air quality control applications, in heating applications, in the field of renewable energy and in the food field.

**TECHNICAL DATA**

TEMPERATURE RANGE	(-50 +110)°C
MODEL	Contact
SENSOR	PT100
CAPSULE	Diameter 4x40 mm
CABLE	TPE round
TERMINATIONS	Tin-plated, tips, connectors (other terminations available on request)
RESPONSE TIME	10 s in non-static liquid at 63.2% (depends on configuration)
IDENTIFICATION	Laser on cable, label (customizable)
DECLARATIONS OF CONFORMITY	CE MARKING, CONFLICT MINERALS, REACH, REACH, ROHS

GDU04C

PROBES WITH FAST METAL CAPSULE

PRODUCT FAMILY 15CA10

Probe with steel capsule, PT100 sensor, TPE round cable, diameter 4x40 mm capsule. Suitable for temperature sensing in laboratory equipment and machinery, in refrigeration and air conditioning applications, in air quality control applications, in heating applications, in the field of renewable energy and in the food field.

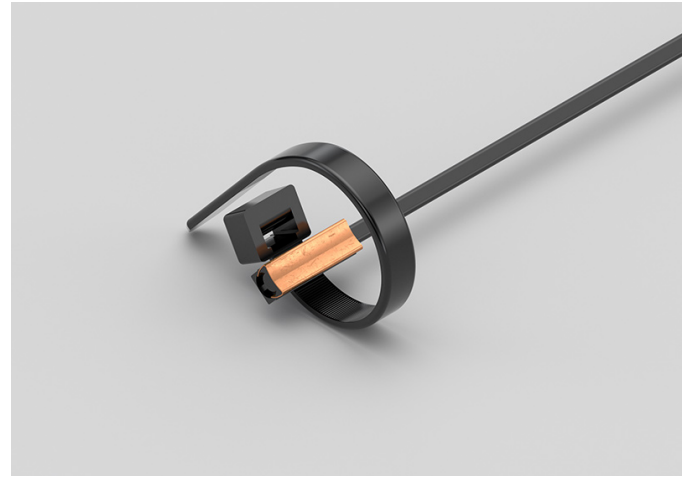


TECHNICAL DATA

TEMPERATURE RANGE	(-50 +110)°C
MODEL	Steel capsule
SENSOR	PT100
CAPSULE	Diameter 4x40 mm
CABLE	TPE round
TERMINITIONS	Tin-plated, tips, connectors (other terminations available on request)
RESPONSE TIME	10 s in non-static liquid at 63.2% (depends on configuration)
IDENTIFICATION	Laser on cable, label (customizable)
DECLARATIONS OF CONFORMITY	CE MARKING, CONFLICT MINERALS, MOCA, REACH, REACH, ROHS

GEI02C**IP55 COPPER PLATE
BRACELET PROBES****PRODUCT FAMILY 30GB15**

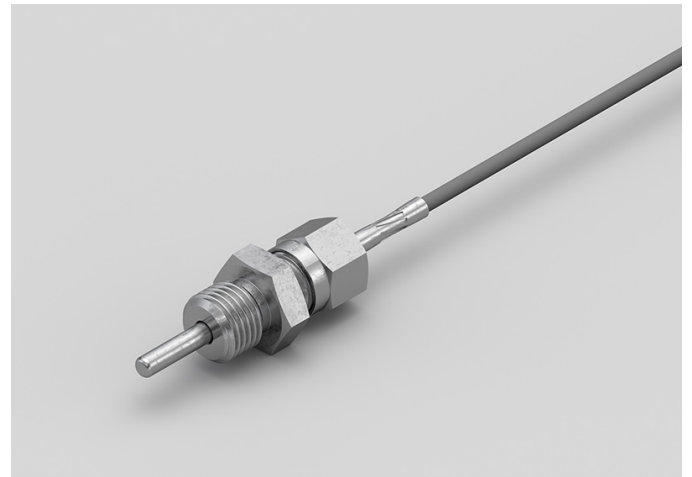
Probe with bracelet, PT100 sensor, TPE flat cable, 6x6x15 mm + copper plate capsule. Suitable for temperature sensing in refrigeration and air conditioning applications, in air quality control applications, in heating applications and in the field of renewable energy.

**TECHNICAL DATA**

TEMPERATURE RANGE	(-50 +120)°C
MODEL	Bracelet
SENSOR	PT100
CAPSULE	6x6x15 mm + copper plate
CABLE	TPE flat
TERMINATIONS	Tin-plated, tips, connectors (other terminations available on request)
RESPONSE TIME	10 s in non-static liquid at 63.2% (depends on configuration)
IDENTIFICATION	Laser on cable, label (customizable)
DECLARATIONS OF CONFORMITY	CE MARKING, CONFLICT MINERALS, REACH, REACH, ROHS

GGM08C**PROBES WITH SLIDING
THREADED CONNECTION****PRODUCT FAMILY 15CR10**

Probe with connector, PT100 sensor, in silicone cable, diameter 4x40 mm capsule. Suitable for temperature sensing in laboratory equipment and machinery, in refrigeration and air conditioning applications, in air quality control applications, in heating applications, in the field of renewable energy, in the food field and in the industrial field.

**TECHNICAL DATA**

TEMPERATURE RANGE	(-50 +200)°C
MODEL	With connector
SENSOR	PT100
CAPSULE	Diameter 4x40 mm
CABLE	Silicone
TERMINATIONS	Tin-plated, tips, connectors (other terminations available on request)
RESPONSE TIME	10 s in non-static liquid at 63.2% (depends on configuration)
IDENTIFICATION	Laser on cable, label (customizable)
DECLARATIONS OF CONFORMITY	CE MARKING, CONFLICT MINERALS, REACH, REACH, ROHS

GGM09C**PROBES WITH WELDED
THREADED CONNECTION****PRODUCT FAMILY 15CR05**

Probe with connector, PT100 sensor, in silicone cable, diameter 4x40 mm capsule. Suitable for temperature sensing in laboratory equipment and machinery, in refrigeration and air conditioning applications, in air quality control applications, in heating applications, in the field of renewable energy, in the food field and in the industrial field.

**TECHNICAL DATA**

TEMPERATURE RANGE	(-50 +200)°C
MODEL	With connector
SENSOR	PT100
CAPSULE	Diameter 4x40 mm
CABLE	Silicone
TERMINATIONS	Tin-plated, tips, connectors (other terminations available on request)
RESPONSE TIME	10 s in non-static liquid at 63.2% (depends on configuration)
IDENTIFICATION	Laser on cable, label (customizable)
DECLARATIONS OF CONFORMITY	CE MARKING, CONFLICT MINERALS, REACH, REACH, ROHS

GG002C

STANDARD EYELET PROBES

PRODUCT FAMILY 15C005

Contact probe with PT100 sensor, in silicone cable, diameter 4x40 mm capsule. Suitable for temperature sensing in refrigeration and air conditioning applications, in air quality control applications, in heating applications, in the field of renewable energy and in the food field.

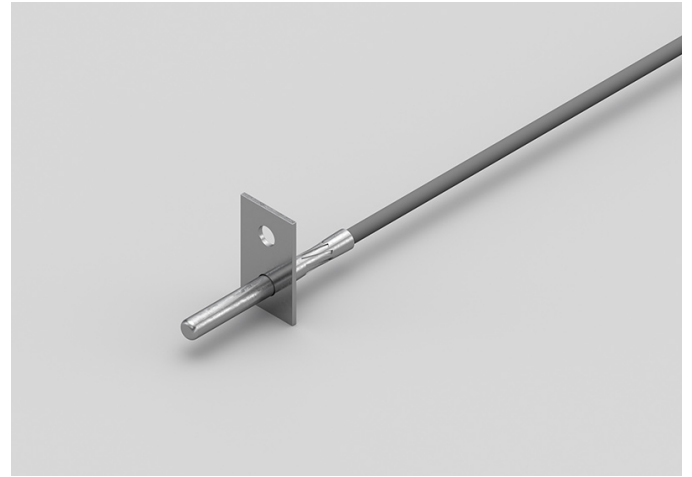


TECHNICAL DATA

TEMPERATURE RANGE	(-50 +200)°C
MODEL	Contact
SENSOR	PT100
CAPSULE	Diameter 4x40 mm
CABLE	Silicone
TERMINATIONS	Tin-plated, tips, connectors (other terminations available on request)
RESPONSE TIME	10 s in non-static liquid at 63.2% (depends on configuration)
IDENTIFICATION	Laser on cable, label (customizable)
DECLARATIONS OF CONFORMITY	CE MARKING, CONFLICT MINERALS, REACH, REACH, ROHS

GG003C**METAL CAPSULE PROBES
WITH FLANGE****PRODUCT FAMILY 15CA25**

Contact probe with PT100 sensor, in silicone cable, diameter 4x40 mm capsule. Suitable for temperature sensing in refrigeration and air conditioning applications, in air quality control applications, in heating applications, in the field of renewable energy and in the food field.

**TECHNICAL DATA**

TEMPERATURE RANGE	(-50 +200)°C
MODEL	Contact
SENSOR	PT100
CAPSULE	Diameter 4x40 mm
CABLE	Silicone
TERMINATIONS	Tin-plated, tips, connectors (other terminations available on request)
RESPONSE TIME	10 s in non-static liquid at 63.2% (depends on configuration)
IDENTIFICATION	Laser on cable, label (customizable)
DECLARATIONS OF CONFORMITY	CE MARKING, CONFLICT MINERALS, REACH, REACH, ROHS

GGU02C

PROBES WITH FAST METAL CAPSULE

PRODUCT FAMILY 15CA10

Probe with steel capsule, PT100 sensor, in silicone cable, diameter 4x40 mm capsule. Suitable for temperature sensing in laboratory equipment and machinery, in refrigeration and air conditioning applications, in air quality control applications, in heating applications, in the field of renewable energy and in the food field.



TECHNICAL DATA

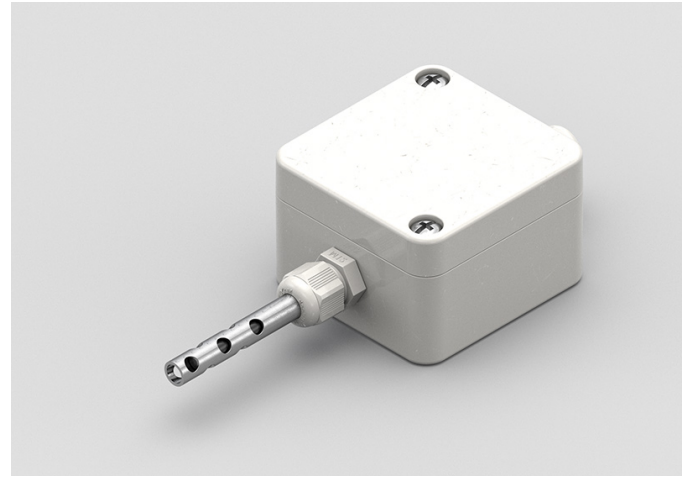
TEMPERATURE RANGE	(-50 +200)°C
MODEL	Steel capsule
SENSOR	PT100
CAPSULE	Diameter 4x40 mm
CABLE	Silicone
TERMINITIONS	Tin-plated, tips, connectors (other terminations available on request)
RESPONSE TIME	10 s in non-static liquid at 63.2% (depends on configuration)
IDENTIFICATION	Laser on cable, label (customizable)
DECLARATIONS OF CONFORMITY	CE MARKING, CONFLICT MINERALS, MOCA, REACH, REACH, ROHS

GPF00C

PROBES WITH PERFORATED METAL CAPSULE

PRODUCT FAMILY 15CA15

Probe with exposed sensor, PT100 sensor, in PVC cable, diameter 6X100 mm capsule. Suitable for temperature sensing in refrigeration and air conditioning applications, in air quality control applications, in heating applications and in the field of renewable energy.



TECHNICAL DATA

TEMPERATURE RANGE	(0 +70)°C
MODEL	Exposed sensor
SENSOR	PT100
CAPSULE	Diameter 6X100 mm
CABLE	PVC
TERMINATIONS	Tin-plated, tips, connectors (other terminations available on request)
RESPONSE TIME	10 s in non-static liquid at 63.2% (depends on configuration)
IDENTIFICATION	Laser on cable, label (customizable)
DECLARATIONS OF CONFORMITY	CE MARKING, CONFLICT MINERALS, REACH, REACH, ROHS

GPM04C**PROBES WITH SLIDING
THREADED CONNECTION****PRODUCT FAMILY 15CR10**

Probe with connector, PT100 sensor, in PVC cable, diameter 4x40 mm capsule. Suitable for temperature sensing in laboratory equipment and machinery, in refrigeration and air conditioning applications, in air quality control applications, in heating applications, in the field of renewable energy and in the food field.

**TECHNICAL DATA**

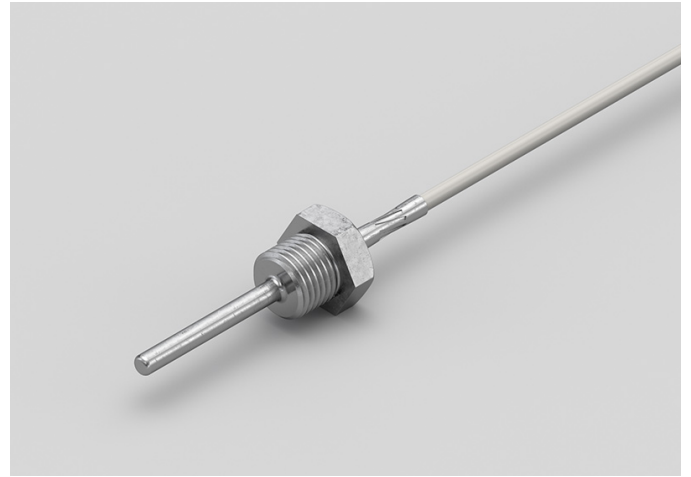
TEMPERATURE RANGE	(-30 +80)°C
MODEL	With connector
SENSOR	PT100
CAPSULE	Diameter 4x40 mm
CABLE	PVC
TERMINATIONS	Tin-plated, tips, connectors (other terminations available on request)
RESPONSE TIME	10 s in non-static liquid at 63.2% (depends on configuration)
IDENTIFICATION	Laser on cable, label (customizable)
DECLARATIONS OF CONFORMITY	CE MARKING, CONFLICT MINERALS, REACH, REACH, ROHS

GPM05C

PROBES WITH WELDED THREADED CONNECTION

PRODUCT FAMILY 15CR05

Probe with connector, PT100 sensor, in PVC cable, diameter 4x40 mm capsule. Suitable for temperature sensing in laboratory equipment and machinery, in refrigeration and air conditioning applications, in air quality control applications, in heating applications, in the field of renewable energy and in the food field.

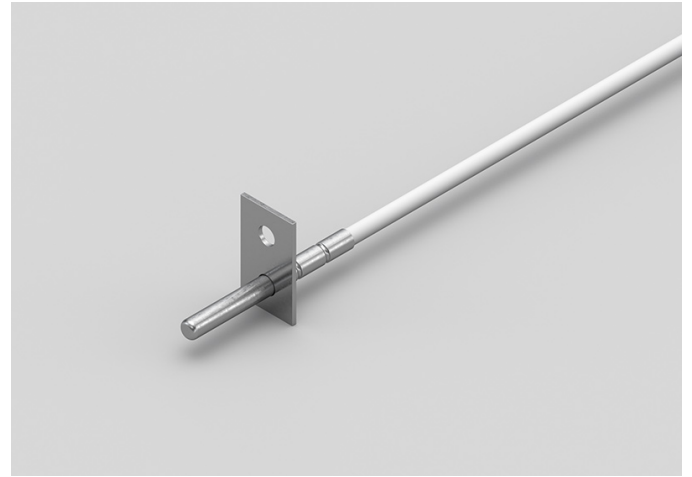


TECHNICAL DATA

TEMPERATURE RANGE	(-30 +80)°C
MODEL	With connector
SENSOR	PT100
CAPSULE	Diameter 4x40 mm
CABLE	PVC
TERMINATIONS	Tin-plated, tips, connectors (other terminations available on request)
RESPONSE TIME	10 s in non-static liquid at 63.2% (depends on configuration)
IDENTIFICATION	Laser on cable, label (customizable)
DECLARATIONS OF CONFORMITY	CE MARKING, CONFLICT MINERALS, REACH, REACH, ROHS

GPO01C**METAL CAPSULE PROBES
WITH FLANGE****PRODUCT FAMILY 15CA25**

Contact probe with PT100 sensor, in PVC cable, diameter 4x40 mm capsule. Suitable for temperature sensing in refrigeration and air conditioning applications, in air quality control applications, in heating applications, in the field of renewable energy and in the food field.

**TECHNICAL DATA**

TEMPERATURE RANGE	(-30 +80)°C
MODEL	Contact
SENSOR	PT100
CAPSULE	Diameter 4x40 mm
CABLE	PVC
TERMINITIONS	Tin-plated, tips, connectors (other terminations available on request)
RESPONSE TIME	10 s in non-static liquid at 63.2% (depends on configuration)
IDENTIFICATION	Laser on cable, label (customizable)
DECLARATIONS OF CONFORMITY	CE MARKING, CONFLICT MINERALS, REACH, REACH, ROHS

GPO03C**STANDARD EYELET PROBES****PRODUCT FAMILY 15C005**

Contact probe with PT100 sensor, in PVC cable, diameter 4x40 mm capsule. Suitable for temperature sensing in refrigeration and air conditioning applications, in air quality control applications, in heating applications, in the field of renewable energy and in the food field.

**TECHNICAL DATA**

TEMPERATURE RANGE	(-30 +80)°C
MODEL	Contact
SENSOR	PT100
CAPSULE	Diameter 4x40 mm
CABLE	PVC
TERMINATIONS	Tin-plated, tips, connectors (other terminations available on request)
RESPONSE TIME	10 s in non-static liquid at 63.2% (depends on configuration)
IDENTIFICATION	Laser on cable, label (customizable)
DECLARATIONS OF CONFORMITY	CE MARKING, CONFLICT MINERALS, REACH, REACH, ROHS

GPU00C

PROBES WITH FAST METAL CAPSULE

PRODUCT FAMILY 15CA10

Probe with steel capsule, PT100 sensor, in PVC cable, diameter 4x40 mm capsule. Suitable for temperature sensing in laboratory equipment and machinery, in refrigeration and air conditioning applications, in air quality control applications, in heating applications, in the field of renewable energy and in the food field.



TECHNICAL DATA

TEMPERATURE RANGE	(-30 +80)°C
MODEL	Steel capsule
SENSOR	PT100
CAPSULE	Diameter 4x40 mm
CABLE	PVC
TERMINATIONS	Tin-plated, tips, connectors (other terminations available on request)
RESPONSE TIME	10 s in non-static liquid at 63.2% (depends on configuration)
IDENTIFICATION	Laser on cable, label (customizable)
DECLARATIONS OF CONFORMITY	CE MARKING, CONFLICT MINERALS, MOCA, REACH, REACH, ROHS

GTM06C

PROBES WITH SLIDING THREADED CONNECTION

PRODUCT FAMILY 15CR10

Probe with connector, PT100 sensor, in Teflon cable, diameter 4x40 mm capsule. Suitable for temperature sensing in laboratory equipment and machinery, in refrigeration and air conditioning applications, in air quality control applications, in heating applications, in the field of renewable energy, in the food field and in the industrial field.



TECHNICAL DATA

TEMPERATURE RANGE	(-50 +250)°C
MODEL	With connector
SENSOR	PT100
CAPSULE	Diameter 4x40 mm
CABLE	Teflon
TERMINATIONS	Tin-plated, tips, connectors (other terminations available on request)
RESPONSE TIME	10 s in non-static liquid at 63.2% (depends on configuration)
IDENTIFICATION	Laser on cable, label (customizable)
DECLARATIONS OF CONFORMITY	CE MARKING, CONFLICT MINERALS, REACH, REACH, ROHS

GTM07C**PROBES WITH WELDED
THREADED CONNECTION****PRODUCT FAMILY 15CR05**

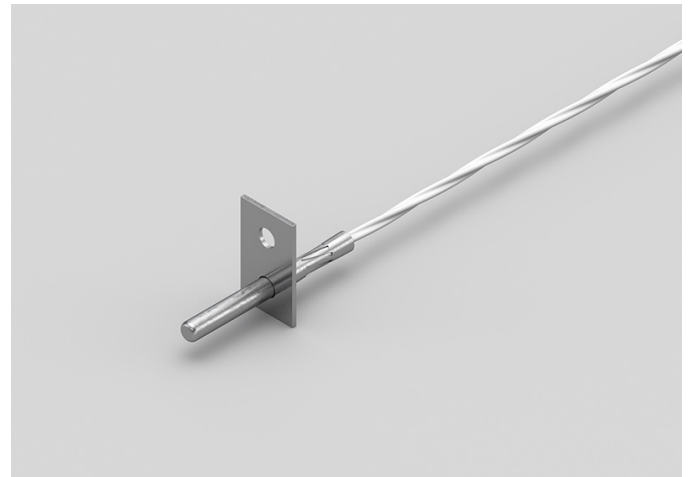
Probe with connector, PT100 sensor, in Teflon cable, diameter 4x40 mm capsule. Suitable for temperature sensing in laboratory equipment and machinery, in refrigeration and air conditioning applications, in air quality control applications, in heating applications, in the field of renewable energy, in the food field and in the industrial field.

**TECHNICAL DATA**

TEMPERATURE RANGE	(-50 +250)°C
MODEL	With connector
SENSOR	PT100
CAPSULE	Diameter 4x40 mm
CABLE	Teflon
TERMINATIONS	Tin-plated, tips, connectors (other terminations available on request)
RESPONSE TIME	10 s in non-static liquid at 63.2% (depends on configuration)
IDENTIFICATION	Laser on cable, label (customizable)
DECLARATIONS OF CONFORMITY	CE MARKING, CONFLICT MINERALS, REACH, REACH, ROHS

GTO01C**METAL CAPSULE PROBES
WITH FLANGE****PRODUCT FAMILY 15CA25**

Contact probe with PT100 sensor, in Teflon cable, diameter 4x40 mm capsule. Suitable for temperature sensing in refrigeration and air conditioning applications, in air quality control applications, in heating applications, in the field of renewable energy, in the food field and in the industrial field.

**TECHNICAL DATA**

TEMPERATURE RANGE	(-50 +250)°C
MODEL	Contact
SENSOR	PT100
CAPSULE	Diameter 4x40 mm
CABLE	Teflon
TERMINATIONS	Tin-plated, tips, connectors (other terminations available on request)
RESPONSE TIME	10 s in non-static liquid at 63.2% (depends on configuration)
IDENTIFICATION	Laser on cable, label (customizable)
DECLARATIONS OF CONFORMITY	CE MARKING, CONFLICT MINERALS, REACH, REACH, ROHS

GTO03C**STANDARD EYELET PROBES****PRODUCT FAMILY 15C005**

Contact probe with PT100 sensor, in Teflon cable, diameter 4x40 mm capsule. Suitable for temperature sensing in refrigeration and air conditioning applications, in air quality control applications, in heating applications, in the field of renewable energy, in the food field and in the industrial field.

**TECHNICAL DATA**

TEMPERATURE RANGE	(0 +250)°C
MODEL	Contact
SENSOR	PT100
CAPSULE	Diameter 4x40 mm
CABLE	Teflon
TERMINATIONS	Tin-plated, tips, connectors (other terminations available on request)
RESPONSE TIME	10 s in non-static liquid at 63.2% (depends on configuration)
IDENTIFICATION	Laser on cable, label (customizable)
DECLARATIONS OF CONFORMITY	CE MARKING, CONFLICT MINERALS, REACH, REACH, ROHS

GTU01C

PROBES WITH FAST METAL CAPSULE

PRODUCT FAMILY 15CA10

Probe with steel capsule, PT100 sensor, in Teflon cable, diameter 4x40 mm capsule. Suitable for temperature sensing in laboratory equipment and machinery, in refrigeration and air conditioning applications, in air quality control applications, in heating applications, in the field of renewable energy, in the food field and in the industrial field.

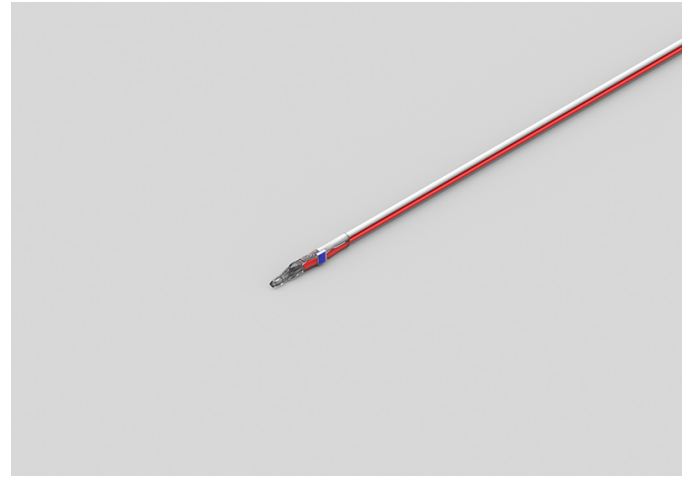


TECHNICAL DATA

TEMPERATURE RANGE	(-50 +250)°C
MODEL	Steel capsule
SENSOR	PT100
CAPSULE	Diameter 4x40 mm
CABLE	Teflon
TERMINATIONS	Tin-plated, tips, connectors (other terminations available on request)
RESPONSE TIME	10 s in non-static liquid at 63.2% (depends on configuration)
IDENTIFICATION	Laser on cable, label (customizable)
DECLARATIONS OF CONFORMITY	CE MARKING, CONFLICT MINERALS, MOCA, REACH, REACH, ROHS

GTX04A**PROBES WITH EXPOSED
DOUBLE-INSULATION
SENSOR****PRODUCT FAMILY 10EP10**

Probe with exposed sensor, PT100 sensor, in Teflon cable, without capsule capsule. Suitable for temperature sensing in laboratory equipment and machinery, in the electrical motors field and in the field of renewable energy.

**TECHNICAL DATA**

TEMPERATURE RANGE	(-50 +250)°C
MODEL	Exposed sensor
SENSOR	PT100
CAPSULE	Without capsule
CABLE	Teflon
TERMINATIONS	Tin-plated, tips, connectors (other terminations available on request)
RESPONSE TIME	10 s in non-static liquid at 63.2% (depends on configuration)
IDENTIFICATION	Laser on cable, label (customizable)
DECLARATIONS OF CONFORMITY	CE MARKING, CONFLICT MINERALS, REACH, REACH, ROHS

GVM03C**PROBES WITH SLIDING
THREADED CONNECTION****PRODUCT FAMILY 15CR10**

Probe with connector, PT100 sensor, in glass fibre cable, diameter 4x40 mm capsule. Suitable for temperature sensing in laboratory equipment and machinery, in refrigeration and air conditioning applications, in air quality control applications, in heating applications, in the field of renewable energy, in the food field and in the industrial field.

**TECHNICAL DATA**

TEMPERATURE RANGE	(0 +250)°C
MODEL	With connector
SENSOR	PT100
CAPSULE	Diameter 4x40 mm
CABLE	Glass fibre
TERMINATIONS	Tin-plated, tips, connectors (other terminations available on request)
RESPONSE TIME	10 s in non-static liquid at 63.2% (depends on configuration)
IDENTIFICATION	Laser on cable, label (customizable)
DECLARATIONS OF CONFORMITY	CE MARKING, CONFLICT MINERALS, REACH, REACH, ROHS

GVM04C**PROBES WITH WELDED
THREADED CONNECTION****PRODUCT FAMILY 15CR05**

Probe with connector, PT100 sensor, in glass fibre cable, diameter 4x40 mm capsule. Suitable for temperature sensing in laboratory equipment and machinery, in refrigeration and air conditioning applications, in air quality control applications, in heating applications, in the field of renewable energy, in the food field and in the industrial field.

**TECHNICAL DATA**

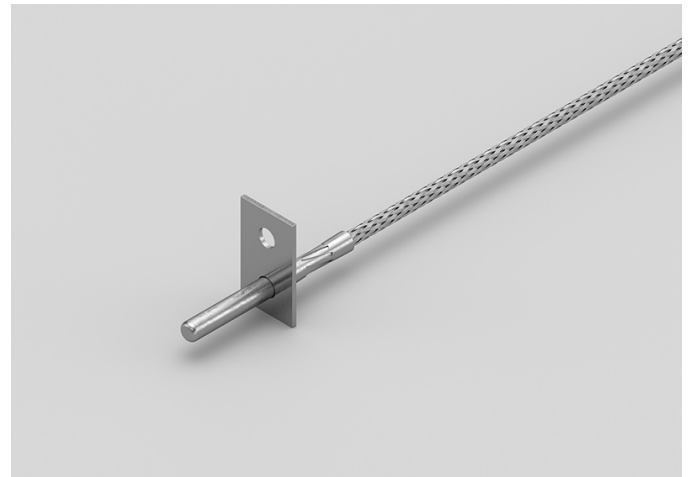
TEMPERATURE RANGE	(0 +250)°C
MODEL	With connector
SENSOR	PT100
CAPSULE	Diameter 4x40 mm
CABLE	Glass fibre
TERMINATIONS	Tin-plated, tips, connectors (other terminations available on request)
RESPONSE TIME	10 s in non-static liquid at 63.2% (depends on configuration)
IDENTIFICATION	Laser on cable, label (customizable)
DECLARATIONS OF CONFORMITY	CE MARKING, CONFLICT MINERALS, REACH, REACH, ROHS

GVO02C

METAL CAPSULE PROBES WITH FLANGE

PRODUCT FAMILY 15CA25

Contact probe with PT100 sensor, in glass fibre cable, diameter 4x40 mm capsule. Suitable for temperature sensing in refrigeration and air conditioning applications, in air quality control applications, in heating applications, in the field of renewable energy and in the food field.



TECHNICAL DATA

TEMPERATURE RANGE	(0 +350)°C
MODEL	Contact
SENSOR	PT100
CAPSULE	Diameter 4x40 mm
CABLE	Glass fibre
TERMINATIONS	Tin-plated, tips, connectors (other terminations available on request)
RESPONSE TIME	10 s in non-static liquid at 63.2% (depends on configuration)
IDENTIFICATION	Laser on cable, label (customizable)
DECLARATIONS OF CONFORMITY	CE MARKING, CONFLICT MINERALS, REACH, REACH, ROHS

GVO04C

STANDARD EYELET PROBES

PRODUCT FAMILY 15C005

Contact probe with PT100 sensor, in glass fibre cable, diameter 4x40 mm capsule. Suitable for temperature sensing in refrigeration and air conditioning applications, in air quality control applications, in heating applications, in the field of renewable energy and in the food field.



TECHNICAL DATA

TEMPERATURE RANGE	(0 +350)°C
MODEL	Contact
SENSOR	PT100
CAPSULE	Diameter 4x40 mm
CABLE	Glass fibre
TERMINATIONS	Tin-plated, tips, connectors (other terminations available on request)
RESPONSE TIME	10 s in non-static liquid at 63.2% (depends on configuration)
IDENTIFICATION	Laser on cable, label (customizable)
DECLARATIONS OF CONFORMITY	CE MARKING, CONFLICT MINERALS, REACH, REACH, ROHS

GVU07C

PROBES WITH FAST METAL CAPSULE

PRODUCT FAMILY 15CA10

Probe with steel capsule, PT100 sensor, in glass fibre cable, diameter 4x40 mm capsule. Suitable for temperature sensing in laboratory equipment and machinery, in refrigeration and air conditioning applications, in air quality control applications, in heating applications, in the field of renewable energy and in the food field.



TECHNICAL DATA

TEMPERATURE RANGE	(0 +350)°C
MODEL	Steel capsule
SENSOR	PT100
CAPSULE	Diameter 4x40 mm
CABLE	Glass fibre
TERMINITIONS	Tin-plated, tips, connectors (other terminations available on request)
RESPONSE TIME	10 s in non-static liquid at 63.2% (depends on configuration)
IDENTIFICATION	Laser on cable, label (customizable)
DECLARATIONS OF CONFORMITY	CE MARKING, CONFLICT MINERALS, MOCA, REACH, REACH, ROHS

IDM01C**PROBES WITH SLIDING
THREADED CONNECTION****PRODUCT FAMILY 15CR10**

Probe with connector, PT1000 sensor, TPE round cable, diameter 4x40 mm capsule. Suitable for temperature sensing in laboratory equipment and machinery, in refrigeration and air conditioning applications, in air quality control applications, in heating applications, in the field of renewable energy and in the food field.

**TECHNICAL DATA**

TEMPERATURE RANGE	(-50 +110)°C
MODEL	With connector
SENSOR	PT1000
CAPSULE	Diameter 4x40 mm
CABLE	TPE round
TERMINATIONS	Tin-plated, tips, connectors (other terminations available on request)
RESPONSE TIME	10 s in non-static liquid at 63.2% (depends on configuration)
IDENTIFICATION	Laser on cable, label (customizable)
DECLARATIONS OF CONFORMITY	CE MARKING, CONFLICT MINERALS, REACH, REACH, ROHS

IDM02C**PROBES WITH WELDED
THREADED CONNECTION****PRODUCT FAMILY 15CR05**

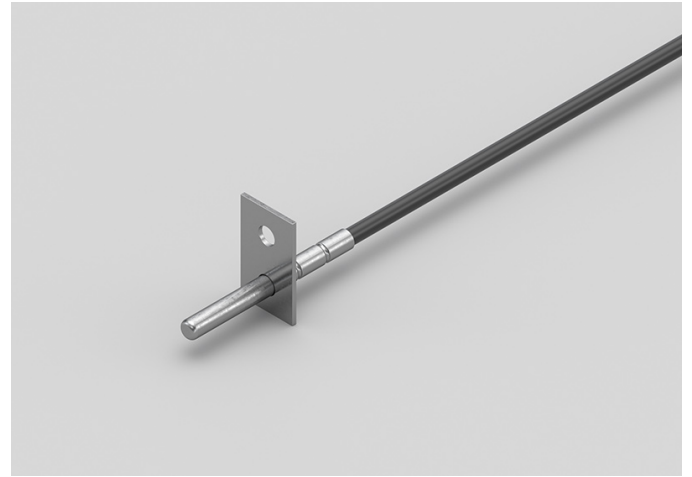
Probe with connector, PT1000 sensor, TPE round cable, diameter 4x40 mm capsule. Suitable for temperature sensing in laboratory equipment and machinery, in refrigeration and air conditioning applications, in air quality control applications, in heating applications, in the field of renewable energy and in the food field.

**TECHNICAL DATA**

TEMPERATURE RANGE	(-50 +110)°C
MODEL	With connector
SENSOR	PT1000
CAPSULE	Diameter 4x40 mm
CABLE	TPE round
TERMINATIONS	Tin-plated, tips, connectors (other terminations available on request)
RESPONSE TIME	10 s in non-static liquid at 63.2% (depends on configuration)
IDENTIFICATION	Laser on cable, label (customizable)
DECLARATIONS OF CONFORMITY	CE MARKING, CONFLICT MINERALS, REACH, REACH, ROHS

IDO00C**METAL CAPSULE PROBES
WITH FLANGE****PRODUCT FAMILY 15CA25**

Contact probe with PT1000 sensor, TPE round cable, diameter 4x40 mm capsule. Suitable for temperature sensing in refrigeration and air conditioning applications, in air quality control applications, in heating applications, in the field of renewable energy and in the food field.

**TECHNICAL DATA**

TEMPERATURE RANGE	(-50 +110)°C
MODEL	Contact
SENSOR	PT1000
CAPSULE	Diameter 4x40 mm
CABLE	TPE round
TERMINATIONS	Tin-plated, tips, connectors (other terminations available on request)
RESPONSE TIME	10 s in non-static liquid at 63.2% (depends on configuration)
IDENTIFICATION	Laser on cable, label (customizable)
DECLARATIONS OF CONFORMITY	CE MARKING, CONFLICT MINERALS, REACH, REACH, ROHS

IDO01C**STANDARD EYELET
PROBES****PRODUCT FAMILY 15C005**

Contact probe with PT1000 sensor, TPE round cable, diameter 4x40 mm capsule. Suitable for temperature sensing in refrigeration and air conditioning applications, in air quality control applications, in heating applications, in the field of renewable energy and in the food field.

**TECHNICAL DATA**

TEMPERATURE RANGE	(-50 +110)°C
MODEL	Contact
SENSOR	PT1000
CAPSULE	Diameter 4x40 mm
CABLE	TPE round
TERMINATIONS	Tin-plated, tips, connectors (other terminations available on request)
RESPONSE TIME	10 s in non-static liquid at 63.2% (depends on configuration)
IDENTIFICATION	Laser on cable, label (customizable)
DECLARATIONS OF CONFORMITY	CE MARKING, CONFLICT MINERALS, REACH, REACH, ROHS

IDU04C

PROBES WITH FAST METAL CAPSULE

PRODUCT FAMILY 15CA10

Probe with steel capsule, PT1000 sensor, TPE round cable, diameter 4x40 mm capsule. Suitable for temperature sensing in laboratory equipment and machinery, in refrigeration and air conditioning applications, in air quality control applications, in heating applications, in the field of renewable energy and in the food field.

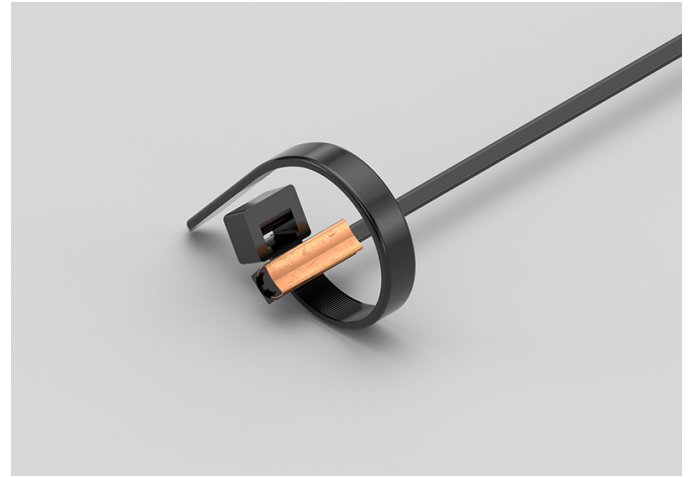


TECHNICAL DATA

TEMPERATURE RANGE	(-50 +110)°C
MODEL	Steel capsule
SENSOR	PT1000
CAPSULE	Diameter 4x40 mm
CABLE	TPE round
TERMINITIONS	Tin-plated, tips, connectors (other terminations available on request)
RESPONSE TIME	10 s in non-static liquid at 63.2% (depends on configuration)
IDENTIFICATION	Laser on cable, label (customizable)
DECLARATIONS OF CONFORMITY	CE MARKING, CONFLICT MINERALS, MOCA, REACH, REACH, ROHS

IEI06C**IP55 COPPER PLATE
BRACELET PROBES****PRODUCT FAMILY 30GB15**

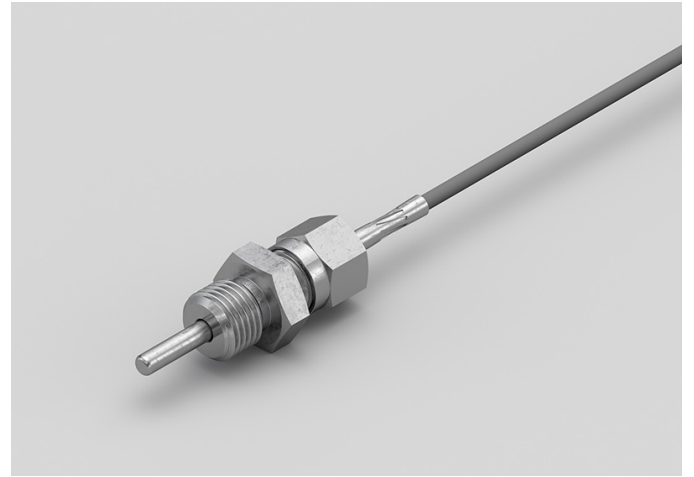
Probe with bracelet, PT1000 sensor, TPE flat cable, 6x6x15 mm + copper plate capsule. Suitable for temperature sensing in refrigeration and air conditioning applications, in air quality control applications, in heating applications and in the field of renewable energy.

**TECHNICAL DATA**

TEMPERATURE RANGE	(-50 +120)°C
MODEL	Bracelet
SENSOR	PT1000
CAPSULE	6x6x15 mm + copper plate
CABLE	TPE flat
TERMINATIONS	Tin-plated, tips, connectors (other terminations available on request)
RESPONSE TIME	10 s in non-static liquid at 63.2% (depends on configuration)
IDENTIFICATION	Laser on cable, label (customizable)
DECLARATIONS OF CONFORMITY	CE MARKING, CONFLICT MINERALS, REACH, REACH, ROHS

IGM06C**PROBES WITH SLIDING
THREADED CONNECTION****PRODUCT FAMILY 15CR10**

Probe with connector, PT1000 sensor, in silicone cable, diameter 4x40 mm capsule. Suitable for temperature sensing in laboratory equipment and machinery, in refrigeration and air conditioning applications, in air quality control applications, in heating applications, in the field of renewable energy, in the food field and in the industrial field.

**TECHNICAL DATA**

TEMPERATURE RANGE	(-50 +200)°C
MODEL	With connector
SENSOR	PT1000
CAPSULE	Diameter 4x40 mm
CABLE	Silicone
TERMINATIONS	Tin-plated, tips, connectors (other terminations available on request)
RESPONSE TIME	10 s in non-static liquid at 63.2% (depends on configuration)
IDENTIFICATION	Laser on cable, label (customizable)
DECLARATIONS OF CONFORMITY	CE MARKING, CONFLICT MINERALS, REACH, REACH, ROHS

IGM07C**PROBES WITH WELDED
THREADED CONNECTION****PRODUCT FAMILY 15CR05**

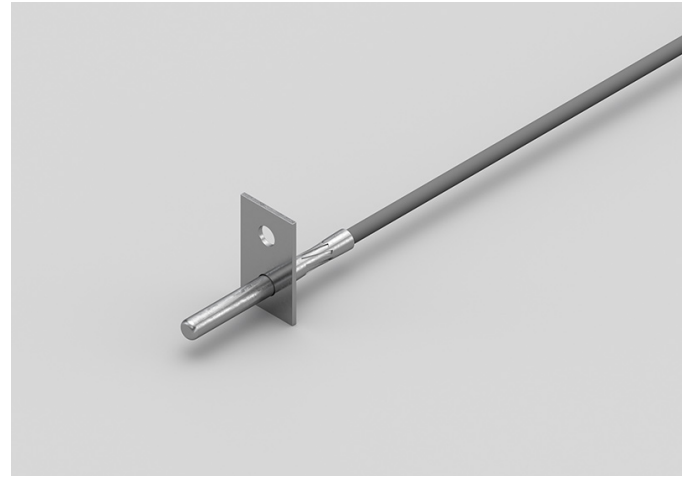
Probe with connector, PT1000 sensor, in silicone cable, diameter 4x40 mm capsule. Suitable for temperature sensing in laboratory equipment and machinery, in refrigeration and air conditioning applications, in air quality control applications, in heating applications, in the field of renewable energy, in the food field and in the industrial field.

**TECHNICAL DATA**

TEMPERATURE RANGE	(-50 +200)°C
MODEL	With connector
SENSOR	PT1000
CAPSULE	Diameter 4x40 mm
CABLE	Silicone
TERMINATIONS	Tin-plated, tips, connectors (other terminations available on request)
RESPONSE TIME	10 s in non-static liquid at 63.2% (depends on configuration)
IDENTIFICATION	Laser on cable, label (customizable)
DECLARATIONS OF CONFORMITY	CE MARKING, CONFLICT MINERALS, REACH, REACH, ROHS

IG004C**METAL CAPSULE PROBES
WITH FLANGE****PRODUCT FAMILY 15CA25**

Contact probe with PT1000 sensor, in silicone cable, diameter 4x40 mm capsule. Suitable for temperature sensing in refrigeration and air conditioning applications, in air quality control applications, in heating applications, in the field of renewable energy and in the food field.

**TECHNICAL DATA**

TEMPERATURE RANGE	(-50 +200)°C
MODEL	Contact
SENSOR	PT1000
CAPSULE	Diameter 4x40 mm
CABLE	Silicone
TERMINITIONS	Tin-plated, tips, connectors (other terminations available on request)
RESPONSE TIME	10 s in non-static liquid at 63.2% (depends on configuration)
IDENTIFICATION	Laser on cable, label (customizable)
DECLARATIONS OF CONFORMITY	CE MARKING, CONFLICT MINERALS, REACH, REACH, ROHS

IG005C**STANDARD EYELET PROBES****PRODUCT FAMILY 15C005**

Contact probe with PT1000 sensor, in silicone cable, diameter 4x40 mm capsule. Suitable for temperature sensing in refrigeration and air conditioning applications, in air quality control applications, in heating applications, in the field of renewable energy and in the food field.

**TECHNICAL DATA**

TEMPERATURE RANGE	(-50 +200)°C
MODEL	Contact
SENSOR	PT1000
CAPSULE	Diameter 4x40 mm
CABLE	Silicone
TERMINATIONS	Tin-plated, tips, connectors (other terminations available on request)
RESPONSE TIME	10 s in non-static liquid at 63.2% (depends on configuration)
IDENTIFICATION	Laser on cable, label (customizable)
DECLARATIONS OF CONFORMITY	CE MARKING, CONFLICT MINERALS, REACH, REACH, ROHS

IGU02C**PROBES WITH STANDARD METAL CAPSULE****PRODUCT FAMILY 15CA05**

Probe with steel capsule, PT1000 sensor, in silicone cable, diameter 4x40 mm capsule. Suitable for temperature sensing in laboratory equipment and machinery, in refrigeration and air conditioning applications, in air quality control applications, in heating applications, in the field of renewable energy and in the food field.

**TECHNICAL DATA**

TEMPERATURE RANGE	(-50 +200)°C
MODEL	Steel capsule
SENSOR	PT1000
CAPSULE	Diameter 4x40 mm
CABLE	Silicone
TERMINATIONS	Tin-plated, tips, connectors (other terminations available on request)
RESPONSE TIME	10 s in non-static liquid at 63.2% (depends on configuration)
IDENTIFICATION	Laser on cable, label (customizable)
DECLARATIONS OF CONFORMITY	CE MARKING, CONFLICT MINERALS, MOCA, REACH, REACH, ROHS

IPF00R

ENVIRONMENTAL PROBES WITH STEEL CAPSULE

PRODUCT FAMILY 50SC05

Environment probe with PT1000 sensor, in PVC cable, diameter 6X100 mm capsule. Suitable for temperature sensing in refrigeration and air conditioning applications, in air quality control applications, in heating applications and in the field of renewable energy.



TECHNICAL DATA

TEMPERATURE RANGE	(0 +70)°C
MODEL	Environment
SENSOR	PT1000
CAPSULE	Diameter 6X100 mm
CABLE	PVC
TERMINATIONS	Tin-plated, tips, connectors (other terminations available on request)
RESPONSE TIME	10 s in non-static liquid at 63.2% (depends on configuration)
IDENTIFICATION	Laser on cable, label (customizable)
DECLARATIONS OF CONFORMITY	CE MARKING, CONFLICT MINERALS, REACH, REACH, ROHS

IPM00C

PROBES WITH SLIDING THREADED CONNECTION

PRODUCT FAMILY 15CR10

Probe with connector, PT1000 sensor, in PVC cable, diameter 4x40 mm capsule. Suitable for temperature sensing in laboratory equipment and machinery, in refrigeration and air conditioning applications, in air quality control applications, in heating applications, in the field of renewable energy and in the food field.



TECHNICAL DATA

TEMPERATURE RANGE	(-30 +80)°C
MODEL	With connector
SENSOR	PT1000
CAPSULE	Diameter 4x40 mm
CABLE	PVC
TERMINATIONS	Tin-plated, tips, connectors (other terminations available on request)
RESPONSE TIME	10 s in non-static liquid at 63.2% (depends on configuration)
IDENTIFICATION	Laser on cable, label (customizable)
DECLARATIONS OF CONFORMITY	CE MARKING, CONFLICT MINERALS, REACH, REACH, ROHS

IPM01C**PROBES WITH WELDED
THREADED CONNECTION****PRODUCT FAMILY 15CR05**

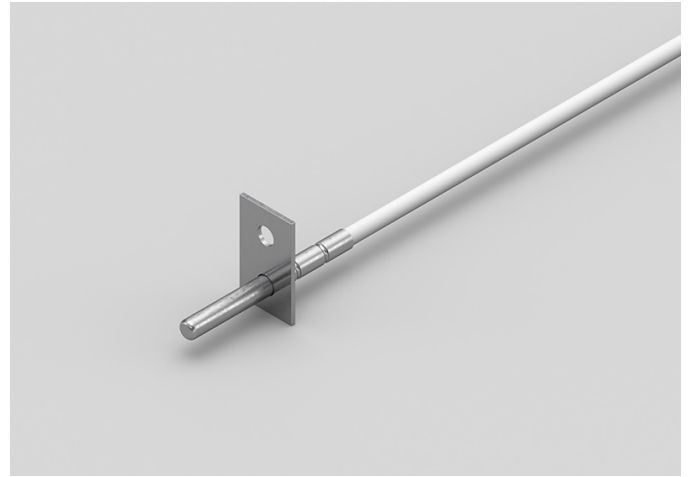
Probe with connector, PT1000 sensor, in PVC cable, diameter 4x40 mm capsule. Suitable for temperature sensing in laboratory equipment and machinery, in refrigeration and air conditioning applications, in air quality control applications, in heating applications, in the field of renewable energy and in the food field.

**TECHNICAL DATA**

TEMPERATURE RANGE	(-30 +80)°C
MODEL	With connector
SENSOR	PT1000
CAPSULE	Diameter 4x40 mm
CABLE	PVC
TERMINATIONS	Tin-plated, tips, connectors (other terminations available on request)
RESPONSE TIME	10 s in non-static liquid at 63.2% (depends on configuration)
IDENTIFICATION	Laser on cable, label (customizable)
DECLARATIONS OF CONFORMITY	CE MARKING, CONFLICT MINERALS, REACH, REACH, ROHS

IPO01C**METAL CAPSULE PROBES
WITH FLANGE****PRODUCT FAMILY 15CA25**

Contact probe with PT1000 sensor, in PVC cable, diameter 4x40 mm capsule. Suitable for temperature sensing in refrigeration and air conditioning applications, in air quality control applications, in heating applications, in the field of renewable energy and in the food field.

**TECHNICAL DATA**

TEMPERATURE RANGE	(-30 +80)°C
MODEL	Contact
SENSOR	PT1000
CAPSULE	Diameter 4x40 mm
CABLE	PVC
TERMINATIONS	Tin-plated, tips, connectors (other terminations available on request)
RESPONSE TIME	10 s in non-static liquid at 63.2% (depends on configuration)
IDENTIFICATION	Laser on cable, label (customizable)
DECLARATIONS OF CONFORMITY	CE MARKING, CONFLICT MINERALS, REACH, REACH, ROHS

IPO02C

STANDARD EYELET PROBES

PRODUCT FAMILY 15C005

Contact probe with PT1000 sensor, in PVC cable, diameter 4x40 mm capsule. Suitable for temperature sensing in refrigeration and air conditioning applications, in air quality control applications, in heating applications, in the field of renewable energy and in the food field.



TECHNICAL DATA

TEMPERATURE RANGE	(-30 +80)°C
MODEL	Contact
SENSOR	PT1000
CAPSULE	Diameter 4x40 mm
CABLE	PVC
TERMINATIONS	Tin-plated, tips, connectors (other terminations available on request)
RESPONSE TIME	10 s in non-static liquid at 63.2% (depends on configuration)
IDENTIFICATION	Laser on cable, label (customizable)
DECLARATIONS OF CONFORMITY	CE MARKING, CONFLICT MINERALS, REACH, REACH, ROHS

IPU00C

PROBES WITH FAST METAL CAPSULE

PRODUCT FAMILY 15CA10

Probe with steel capsule, PT1000 sensor, in PVC cable, diameter 4x40 mm capsule. Suitable for temperature sensing in laboratory equipment and machinery, in refrigeration and air conditioning applications, in air quality control applications, in heating applications, in the field of renewable energy and in the food field.



TECHNICAL DATA

TEMPERATURE RANGE	(-30 +80)°C
MODEL	Steel capsule
SENSOR	PT1000
CAPSULE	Diameter 4x40 mm
CABLE	PVC
TERMINATIONS	Tin-plated, tips, connectors (other terminations available on request)
RESPONSE TIME	10 s in non-static liquid at 63.2% (depends on configuration)
IDENTIFICATION	Laser on cable, label (customizable)
DECLARATIONS OF CONFORMITY	CE MARKING, CONFLICT MINERALS, MOCA, REACH, REACH, ROHS

ITM01C**PROBES WITH SLIDING
THREADED CONNECTION****PRODUCT FAMILY 15CR10**

Probe with connector, PT1000 sensor, in Teflon cable, diameter 4x40 mm capsule. Suitable for temperature sensing in laboratory equipment and machinery, in refrigeration and air conditioning applications, in air quality control applications, in heating applications, in the field of renewable energy, in the food field and in the industrial field.

**TECHNICAL DATA**

TEMPERATURE RANGE	(-50 +250)°C
MODEL	With connector
SENSOR	PT1000
CAPSULE	Diameter 4x40 mm
CABLE	Teflon
TERMINATIONS	Tin-plated, tips, connectors (other terminations available on request)
RESPONSE TIME	10 s in non-static liquid at 63.2% (depends on configuration)
IDENTIFICATION	Laser on cable, label (customizable)
DECLARATIONS OF CONFORMITY	CE MARKING, CONFLICT MINERALS, REACH, REACH, ROHS

ITM02C**PROBES WITH WELDED
THREADED CONNECTION****PRODUCT FAMILY 15CR05**

Probe with connector, PT1000 sensor, in Teflon cable, diameter 4x40 mm capsule. Suitable for temperature sensing in laboratory equipment and machinery, in refrigeration and air conditioning applications, in air quality control applications, in heating applications, in the field of renewable energy, in the food field and in the industrial field.

**TECHNICAL DATA**

TEMPERATURE RANGE	(-50 +250)°C
MODEL	With connector
SENSOR	PT1000
CAPSULE	Diameter 4x40 mm
CABLE	Teflon
TERMINATIONS	Tin-plated, tips, connectors (other terminations available on request)
RESPONSE TIME	10 s in non-static liquid at 63.2% (depends on configuration)
IDENTIFICATION	Laser on cable, label (customizable)
DECLARATIONS OF CONFORMITY	CE MARKING, CONFLICT MINERALS, REACH, REACH, ROHS

ITO03C**STANDARD EYELET PROBES****PRODUCT FAMILY 15C005**

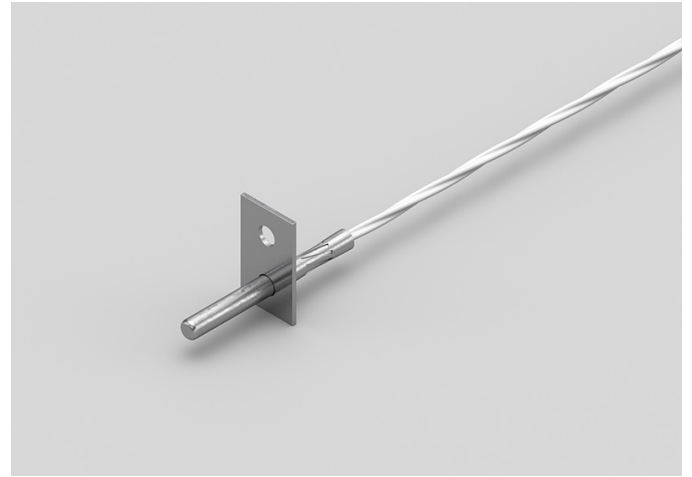
Contact probe with PT1000 sensor, in Teflon cable, diameter 4x40 mm capsule. Suitable for temperature sensing in refrigeration and air conditioning applications, in air quality control applications, in heating applications, in the field of renewable energy, in the food field and in the industrial field.

**TECHNICAL DATA**

TEMPERATURE RANGE	(0 +250)°C
MODEL	Contact
SENSOR	PT1000
CAPSULE	Diameter 4x40 mm
CABLE	Teflon
TERMINITIONS	Tin-plated, tips, connectors (other terminations available on request)
RESPONSE TIME	10 s in non-static liquid at 63.2% (depends on configuration)
IDENTIFICATION	Laser on cable, label (customizable)
DECLARATIONS OF CONFORMITY	CE MARKING, CONFLICT MINERALS, REACH, REACH, ROHS

ITO04C**METAL CAPSULE PROBES
WITH FLANGE****PRODUCT FAMILY 15CA25**

Contact probe with PT1000 sensor, in Teflon cable, diameter 4x40 mm capsule. Suitable for temperature sensing in refrigeration and air conditioning applications, in air quality control applications, in heating applications, in the field of renewable energy, in the food field and in the industrial field.

**TECHNICAL DATA**

TEMPERATURE RANGE	(-50 +250)°C
MODEL	Contact
SENSOR	PT1000
CAPSULE	Diameter 4x40 mm
CABLE	Teflon
TERMINATIONS	Tin-plated, tips, connectors (other terminations available on request)
RESPONSE TIME	10 s in non-static liquid at 63.2% (depends on configuration)
IDENTIFICATION	Laser on cable, label (customizable)
DECLARATIONS OF CONFORMITY	CE MARKING, CONFLICT MINERALS, REACH, REACH, ROHS

ITU05C

PROBES WITH STANDARD METAL CAPSULE

PRODUCT FAMILY 15CA05

Probe with steel capsule, PT1000 sensor, in Teflon cable, diameter 4x40 mm capsule. Suitable for temperature sensing in laboratory equipment and machinery, in refrigeration and air conditioning applications, in air quality control applications, in heating applications, in the field of renewable energy, in the food field and in the industrial field.



TECHNICAL DATA

TEMPERATURE RANGE	(-50 +250)°C
MODEL	Steel capsule
SENSOR	PT1000
CAPSULE	Diameter 4x40 mm
CABLE	Teflon
TERMINATIONS	Tin-plated, tips, connectors (other terminations available on request)
RESPONSE TIME	10 s in non-static liquid at 63.2% (depends on configuration)
IDENTIFICATION	Laser on cable, label (customizable)
DECLARATIONS OF CONFORMITY	CE MARKING, CONFLICT MINERALS, MOCA, REACH, REACH, ROHS

IVM00C

PROBES WITH SLIDING THREADED CONNECTION

PRODUCT FAMILY 15CR10

Probe with connector, PT1000 sensor, in glass fibre cable, diameter 4x40 mm capsule. Suitable for temperature sensing in laboratory equipment and machinery, in refrigeration and air conditioning applications, in air quality control applications, in heating applications, in the field of renewable energy, in the food field and in the industrial field.



TECHNICAL DATA

TEMPERATURE RANGE	(0 +250)°C
MODEL	With connector
SENSOR	PT1000
CAPSULE	Diameter 4x40 mm
CABLE	Glass fibre
TERMINATIONS	Tin-plated, tips, connectors (other terminations available on request)
RESPONSE TIME	10 s in non-static liquid at 63.2% (depends on configuration)
IDENTIFICATION	Laser on cable, label (customizable)
DECLARATIONS OF CONFORMITY	CE MARKING, CONFLICT MINERALS, REACH, REACH, ROHS

IVM01C**PROBES WITH WELDED
THREADED CONNECTION****PRODUCT FAMILY 15CR05**

Probe with connector, PT1000 sensor, in glass fibre cable, diameter 4x40 mm capsule. Suitable for temperature sensing in laboratory equipment and machinery, in refrigeration and air conditioning applications, in air quality control applications, in heating applications, in the field of renewable energy, in the food field and in the industrial field.

**TECHNICAL DATA**

TEMPERATURE RANGE	(0 +250)°C
MODEL	With connector
SENSOR	PT1000
CAPSULE	Diameter 4x40 mm
CABLE	Glass fibre
TERMINATIONS	Tin-plated, tips, connectors (other terminations available on request)
RESPONSE TIME	10 s in non-static liquid at 63.2% (depends on configuration)
IDENTIFICATION	Laser on cable, label (customizable)
DECLARATIONS OF CONFORMITY	CE MARKING, CONFLICT MINERALS, REACH, REACH, ROHS

IVO02C

STANDARD EYELET PROBES

PRODUCT FAMILY 15C005

Contact probe with PT1000 sensor, in glass fibre cable, diameter 4x40 mm capsule. Suitable for temperature sensing in refrigeration and air conditioning applications, in air quality control applications, in heating applications, in the field of renewable energy and in the food field.



TECHNICAL DATA

TEMPERATURE RANGE	(0 +350)°C
MODEL	Contact
SENSOR	PT1000
CAPSULE	Diameter 4x40 mm
CABLE	Glass fibre
TERMINITIONS	Tin-plated, tips, connectors (other terminations available on request)
RESPONSE TIME	10 s in non-static liquid at 63.2% (depends on configuration)
IDENTIFICATION	Laser on cable, label (customizable)
DECLARATIONS OF CONFORMITY	CE MARKING, CONFLICT MINERALS, REACH, REACH, ROHS

IVU07C

PROBES WITH STANDARD METAL CAPSULE

PRODUCT FAMILY 15CA05

Probe with steel capsule, PT1000 sensor, in glass fibre cable, diameter 4x40 mm capsule. Suitable for temperature sensing in laboratory equipment and machinery, in refrigeration and air conditioning applications, in air quality control applications, in heating applications, in the field of renewable energy and in the food field.



TECHNICAL DATA

TEMPERATURE RANGE	(0 +350)°C
MODEL	Steel capsule
SENSOR	PT1000
CAPSULE	Diameter 4x40 mm
CABLE	Glass fibre
TERMINITIONS	Tin-plated, tips, connectors (other terminations available on request)
RESPONSE TIME	10 s in non-static liquid at 63.2% (depends on configuration)
IDENTIFICATION	Laser on cable, label (customizable)
DECLARATIONS OF CONFORMITY	CE MARKING, CONFLICT MINERALS, MOCA, REACH, REACH, ROHS

JKX01C**PROBES WITH EXPOSED
NON-INSULATED SENSOR****PRODUCT FAMILY 10EP15**

Probe with exposed sensor, TCJ sensor, in Kapton cable, without capsule capsule. Suitable for temperature sensing in heating applications and in the field of renewable energy.

**TECHNICAL DATA**

TEMPERATURE RANGE	(0 +350)°C
MODEL	Exposed sensor
SENSOR	TCJ
CAPSULE	Without capsule
CABLE	Kapton
TERMINATIONS	Tin-plated, tips, connectors (other terminations available on request)
RESPONSE TIME	10 s in non-static liquid at 63.2% (depends on configuration)
IDENTIFICATION	Laser on cable, label (customizable)
DECLARATIONS OF CONFORMITY	CE MARKING, CONFLICT MINERALS, REACH, REACH, ROHS

NDM02C**PROBES WITH FAST METAL CAPSULE****PRODUCT FAMILY 15CA10**

Probe with steel capsule, NTC sensor, TPE round cable, diameter 4x40 mm capsule. Suitable for temperature sensing in laboratory equipment and machinery, in refrigeration and air conditioning applications, in air quality control applications, in heating applications, in the field of renewable energy and in the food field.

**TECHNICAL DATA**

TEMPERATURE RANGE	(-50 +110)°C
MODEL	Steel capsule
SENSOR	NTC
CAPSULE	Diameter 4x40 mm
CABLE	TPE round
TERMINITIONS	Tin-plated, tips, connectors (other terminations available on request)
RESPONSE TIME	10 s in non-static liquid at 63.2% (depends on configuration)
IDENTIFICATION	Laser on cable, label (customizable)
DECLARATIONS OF CONFORMITY	CE MARKING, CONFLICT MINERALS, MOCA, REACH, REACH, ROHS

NDO01C**STANDARD EYELET
PROBES****PRODUCT FAMILY 15C005**

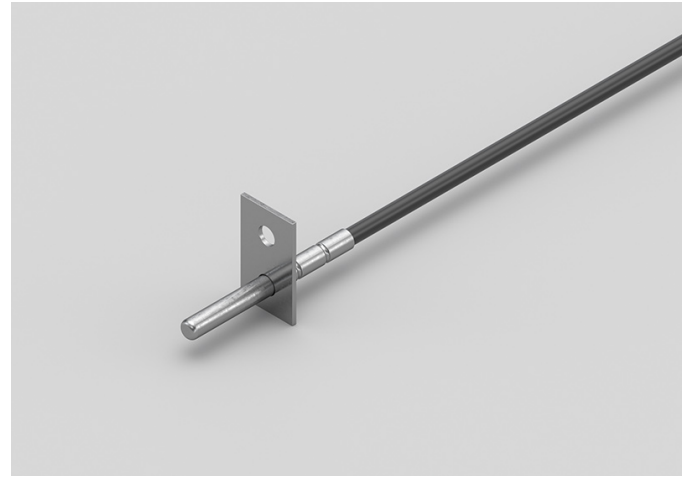
Contact probe with NTC sensor, TPE round cable, diameter 4x40 mm capsule. Suitable for temperature sensing in refrigeration and air conditioning applications, in air quality control applications, in heating applications, in the field of renewable energy and in the food field.

**TECHNICAL DATA**

TEMPERATURE RANGE	(-50 +110)°C
MODEL	Contact
SENSOR	NTC
CAPSULE	Diameter 4x40 mm
CABLE	TPE round
TERMINITIONS	Tin-plated, tips, connectors (other terminations available on request)
RESPONSE TIME	10 s in non-static liquid at 63.2% (depends on configuration)
IDENTIFICATION	Laser on cable, label (customizable)
DECLARATIONS OF CONFORMITY	CE MARKING, CONFLICT MINERALS, REACH, REACH, ROHS

NDO02C**METAL CAPSULE PROBES
WITH FLANGE****PRODUCT FAMILY 15CA25**

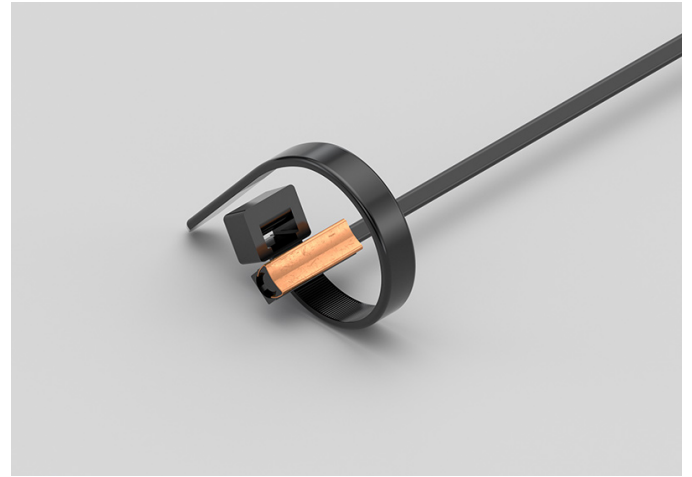
Contact probe with NTC sensor, TPE round cable, diameter 4x40 mm capsule. Suitable for temperature sensing in refrigeration and air conditioning applications, in air quality control applications, in heating applications, in the field of renewable energy and in the food field.

**TECHNICAL DATA**

TEMPERATURE RANGE	(-50 +110)°C
MODEL	Contact
SENSOR	NTC
CAPSULE	Diameter 4x40 mm
CABLE	TPE round
TERMINITIONS	Tin-plated, tips, connectors (other terminations available on request)
RESPONSE TIME	10 s in non-static liquid at 63.2% (depends on configuration)
IDENTIFICATION	Laser on cable, label (customizable)
DECLARATIONS OF CONFORMITY	CE MARKING, CONFLICT MINERALS, REACH, REACH, ROHS

NEI09C**IP55 COPPER PLATE
BRACELET PROBES****PRODUCT FAMILY 30GB15**

Probe with bracelet, NTC sensor, TPE flat cable, 6x6x15 mm + copper plate capsule. Suitable for temperature sensing in refrigeration and air conditioning applications, in air quality control applications, in heating applications and in the field of renewable energy.

**TECHNICAL DATA**

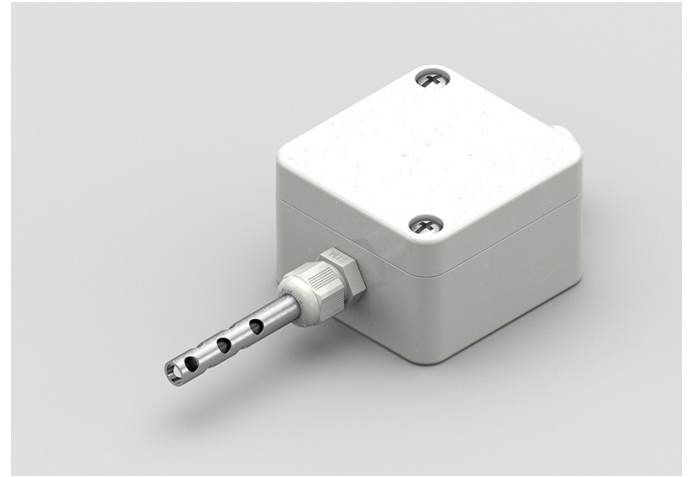
TEMPERATURE RANGE	(-50 +120)°C
MODEL	Bracelet
SENSOR	NTC
CAPSULE	6x6x15 mm + copper plate
CABLE	TPE flat
TERMINATIONS	Tin-plated, tips, connectors (other terminations available on request)
RESPONSE TIME	10 s in non-static liquid at 63.2% (depends on configuration)
IDENTIFICATION	Laser on cable, label (customizable)
DECLARATIONS OF CONFORMITY	CE MARKING, CONFLICT MINERALS, REACH, REACH, ROHS

NPH07R

PROBES WITH STANDARD METAL CAPSULE

PRODUCT FAMILY 15CA05

Probe with steel capsule, NTC sensor, in PVC cable, diameter 6X100 mm capsule. Suitable for temperature sensing in refrigeration and air conditioning applications, in air quality control applications, in heating applications, in the field of renewable energy and in the food field.



TECHNICAL DATA

TEMPERATURE RANGE	(0 +70)°C
MODEL	Steel capsule
SENSOR	NTC
CAPSULE	Diameter 6X100 mm
CABLE	PVC
TERMINATIONS	Tin-plated, tips, connectors (other terminations available on request)
RESPONSE TIME	10 s in non-static liquid at 63.2% (depends on configuration)
IDENTIFICATION	Laser on cable, label (customizable)
DECLARATIONS OF CONFORMITY	CE MARKING, CONFLICT MINERALS, MOCA, REACH, REACH, ROHS

NQM00C

PROBES WITH THREADED CONNECTION

PRODUCT FAMILY 15CR15

Probe with connector, NTC sensor, in PVC cable, diameter 4x40 mm capsule. Suitable for temperature sensing in laboratory equipment and machinery, in refrigeration and air conditioning applications, in air quality control applications, in heating applications, in the field of renewable energy and in the food field.

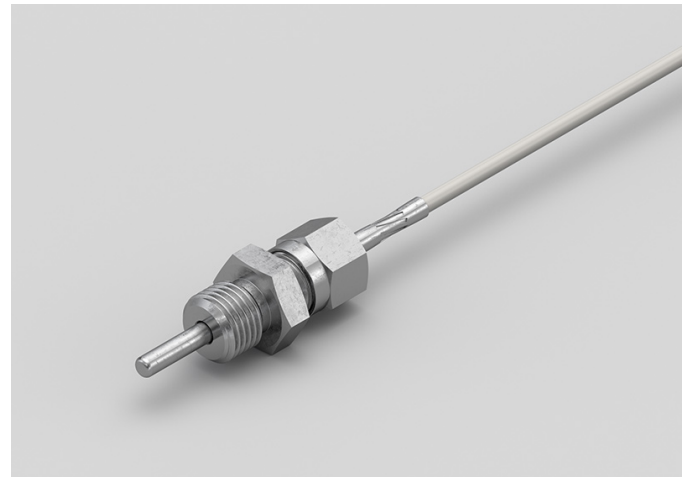


TECHNICAL DATA

TEMPERATURE RANGE	(-30 +80)°C
MODEL	With connector
SENSOR	NTC
CAPSULE	Diameter 4x40 mm
CABLE	PVC
TERMINATIONS	Tin-plated, tips, connectors (other terminations available on request)
RESPONSE TIME	10 s in non-static liquid at 63.2% (depends on configuration)
IDENTIFICATION	Laser on cable, label (customizable)
DECLARATIONS OF CONFORMITY	CE MARKING, CONFLICT MINERALS, REACH, REACH, ROHS

NQM01C**PROBES WITH THREADED CONNECTION****PRODUCT FAMILY 15CR15**

Probe with connector, NTC sensor, in PVC cable, diameter 4x40 mm capsule. Suitable for temperature sensing in laboratory equipment and machinery, in refrigeration and air conditioning applications, in air quality control applications, in heating applications, in the field of renewable energy and in the food field.

**TECHNICAL DATA**

TEMPERATURE RANGE	(-30 +80)°C
MODEL	With connector
SENSOR	NTC
CAPSULE	Diameter 4x40 mm
CABLE	PVC
TERMINITIONS	Tin-plated, tips, connectors (other terminations available on request)
RESPONSE TIME	10 s in non-static liquid at 63.2% (depends on configuration)
IDENTIFICATION	Laser on cable, label (customizable)
DECLARATIONS OF CONFORMITY	CE MARKING, CONFLICT MINERALS, REACH, REACH, ROHS

NQ000C

PROBES WITH THREADED CONNECTION

PRODUCT FAMILY 15CR15

Probe with connector, NTC sensor, in PVC cable, diameter 4x40 mm capsule. Suitable for temperature sensing in refrigeration and air conditioning applications, in air quality control applications, in heating applications, in the field of renewable energy and in the food field.

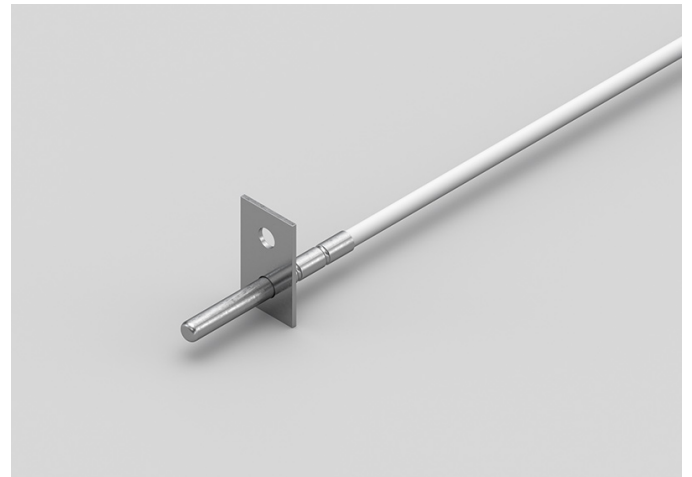


TECHNICAL DATA

TEMPERATURE RANGE	(-30 +80)°C
MODEL	With connector
SENSOR	NTC
CAPSULE	Diameter 4x40 mm
CABLE	PVC
TERMINATIONS	Tin-plated, tips, connectors (other terminations available on request)
RESPONSE TIME	10 s in non-static liquid at 63.2% (depends on configuration)
IDENTIFICATION	Laser on cable, label (customizable)
DECLARATIONS OF CONFORMITY	CE MARKING, CONFLICT MINERALS, REACH, REACH, ROHS

NQU00C**PROBES WITH THREADED CONNECTION****PRODUCT FAMILY 15CR15**

Probe with connector, NTC sensor, in PVC cable, diameter 4x40 mm capsule. Suitable for temperature sensing in refrigeration and air conditioning applications, in air quality control applications, in heating applications, in the field of renewable energy and in the food field.

**TECHNICAL DATA**

TEMPERATURE RANGE	(-30 +80)°C
MODEL	With connector
SENSOR	NTC
CAPSULE	Diameter 4x40 mm
CABLE	PVC
TERMINATIONS	Tin-plated, tips, connectors (other terminations available on request)
RESPONSE TIME	10 s in non-static liquid at 63.2% (depends on configuration)
IDENTIFICATION	Laser on cable, label (customizable)
DECLARATIONS OF CONFORMITY	CE MARKING, CONFLICT MINERALS, REACH, REACH, ROHS

NQU01C**PROBES WITH THREADED CONNECTION****PRODUCT FAMILY 15CR15**

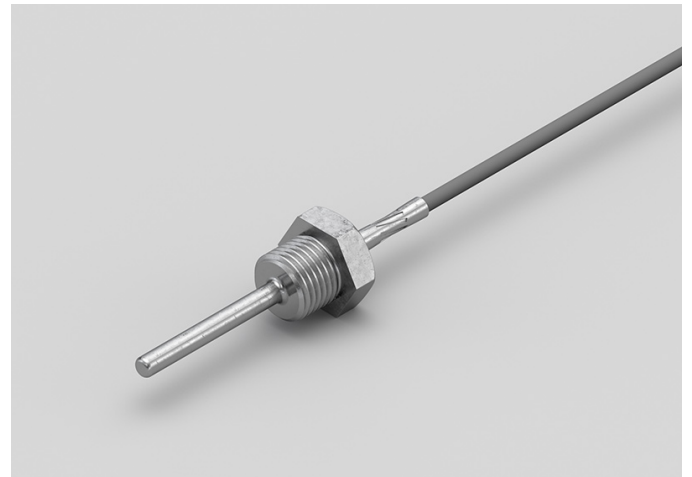
Probe with connector, NTC sensor, in PVC cable, diameter 4x40 mm capsule. Suitable for temperature sensing in refrigeration and air conditioning applications, in air quality control applications, in heating applications, in the field of renewable energy and in the food field.

**TECHNICAL DATA**

TEMPERATURE RANGE	(-30 +80)°C
MODEL	With connector
SENSOR	NTC
CAPSULE	Diameter 4x40 mm
CABLE	PVC
TERMINATIONS	Tin-plated, tips, connectors (other terminations available on request)
RESPONSE TIME	10 s in non-static liquid at 63.2% (depends on configuration)
IDENTIFICATION	Laser on cable, label (customizable)
DECLARATIONS OF CONFORMITY	CE MARKING, CONFLICT MINERALS, REACH, REACH, ROHS

RGM04C**PROBES WITH WELDED
THREADED CONNECTION****PRODUCT FAMILY 15CR05**

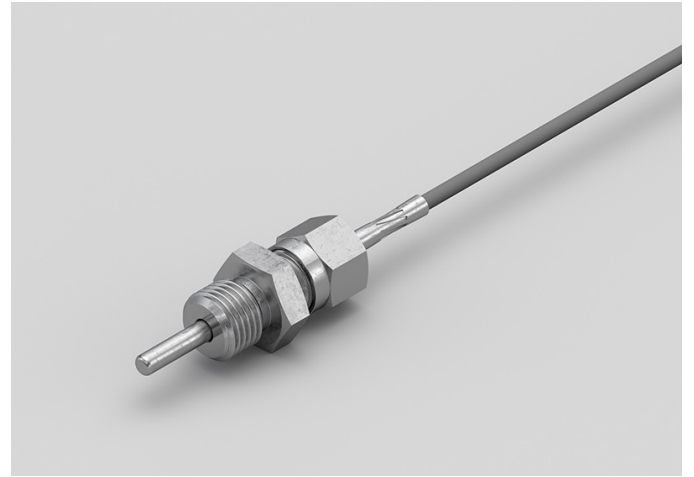
Probe with connector, NTC sensor, in silicone cable, diameter 4x40 mm capsule. Suitable for temperature sensing in laboratory equipment and machinery, in refrigeration and air conditioning applications, in air quality control applications, in heating applications, in the field of renewable energy and in the food field.

**TECHNICAL DATA**

TEMPERATURE RANGE	(-50 +200)°C
MODEL	With connector
SENSOR	NTC
CAPSULE	Diameter 4x40 mm
CABLE	Silicone
TERMINATIONS	Tin-plated, tips, connectors (other terminations available on request)
RESPONSE TIME	10 s in non-static liquid at 63.2% (depends on configuration)
IDENTIFICATION	Laser on cable, label (customizable)
DECLARATIONS OF CONFORMITY	CE MARKING, CONFLICT MINERALS, REACH, REACH, ROHS

RGM05C**PROBES WITH WELDED
THREADED CONNECTION****PRODUCT FAMILY 15CR05**

Probe with connector, NTC sensor, in silicone cable, diameter 4x40 mm capsule. Suitable for temperature sensing in laboratory equipment and machinery, in refrigeration and air conditioning applications, in air quality control applications, in heating applications, in the field of renewable energy and in the food field.

**TECHNICAL DATA**

TEMPERATURE RANGE	(-50 +200)°C
MODEL	With connector
SENSOR	NTC
CAPSULE	Diameter 4x40 mm
CABLE	Silicone
TERMINATIONS	Tin-plated, tips, connectors (other terminations available on request)
RESPONSE TIME	10 s in non-static liquid at 63.2% (depends on configuration)
IDENTIFICATION	Laser on cable, label (customizable)
DECLARATIONS OF CONFORMITY	CE MARKING, CONFLICT MINERALS, REACH, REACH, ROHS

RG001C

PROBES WITH STANDARD METAL CAPSULE

PRODUCT FAMILY 15CA05

Probe with steel capsule, NTC sensor, in silicone cable, diameter 4x40 mm capsule. Suitable for temperature sensing in refrigeration and air conditioning applications, in air quality control applications, in heating applications, in the field of renewable energy and in the food field.



TECHNICAL DATA

TEMPERATURE RANGE	(-50 +200)°C
MODEL	Steel capsule
SENSOR	NTC
CAPSULE	Diameter 4x40 mm
CABLE	Silicone
TERMINATIONS	Tin-plated, tips, connectors (other terminations available on request)
RESPONSE TIME	10 s in non-static liquid at 63.2% (depends on configuration)
IDENTIFICATION	Laser on cable, label (customizable)
DECLARATIONS OF CONFORMITY	CE MARKING, CONFLICT MINERALS, MOCA, REACH, REACH, ROHS

RGU02C

PROBES WITH FAST METAL CAPSULE

PRODUCT FAMILY 15CA10

Probe with steel capsule, NTC sensor, in silicone cable, diameter 4x40 mm capsule. Suitable for temperature sensing in refrigeration and air conditioning applications, in air quality control applications, in heating applications, in the field of renewable energy and in the food field.



TECHNICAL DATA

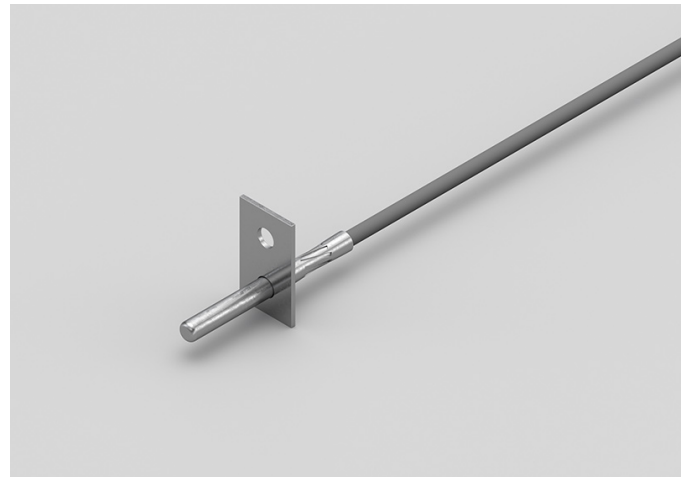
TEMPERATURE RANGE	(-50 +200)°C
MODEL	Steel capsule
SENSOR	NTC
CAPSULE	Diameter 4x40 mm
CABLE	Silicone
TERMINATIONS	Tin-plated, tips, connectors (other terminations available on request)
RESPONSE TIME	10 s in non-static liquid at 63.2% (depends on configuration)
IDENTIFICATION	Laser on cable, label (customizable)
DECLARATIONS OF CONFORMITY	CE MARKING, CONFLICT MINERALS, MOCA, REACH, REACH, ROHS

RGU03C

PROBES WITH FAST METAL CAPSULE

PRODUCT FAMILY 15CA10

Probe with steel capsule, NTC sensor, in silicone cable, diameter 4x40 mm capsule. Suitable for temperature sensing in refrigeration and air conditioning applications, in air quality control applications, in heating applications, in the field of renewable energy and in the food field.



TECHNICAL DATA

TEMPERATURE RANGE	(-50 +200)°C
MODEL	Steel capsule
SENSOR	NTC
CAPSULE	Diameter 4x40 mm
CABLE	Silicone
TERMINITIONS	Tin-plated, tips, connectors (other terminations available on request)
RESPONSE TIME	10 s in non-static liquid at 63.2% (depends on configuration)
IDENTIFICATION	Laser on cable, label (customizable)
DECLARATIONS OF CONFORMITY	CE MARKING, CONFLICT MINERALS, MOCA, REACH, REACH, ROHS

RTM03C**PROBES WITH THREADED CONNECTION****PRODUCT FAMILY 15CR15**

Probe with connector, NTC sensor, in Teflon cable, diameter 4x40 mm capsule. Suitable for temperature sensing in laboratory equipment and machinery, in refrigeration and air conditioning applications, in air quality control applications, in heating applications, in the field of renewable energy and in the food field.

**TECHNICAL DATA**

TEMPERATURE RANGE	(-50 +250)°C
MODEL	With connector
SENSOR	NTC
CAPSULE	Diameter 4x40 mm
CABLE	Teflon
TERMINATIONS	Tin-plated, tips, connectors (other terminations available on request)
RESPONSE TIME	10 s in non-static liquid at 63.2% (depends on configuration)
IDENTIFICATION	Laser on cable, label (customizable)
DECLARATIONS OF CONFORMITY	CE MARKING, CONFLICT MINERALS, REACH, REACH, ROHS

RTM04C

PROBES WITH THREADED CONNECTION

PRODUCT FAMILY 15CR15

Probe with connector, NTC sensor, in Teflon cable, diameter 4x40 mm capsule. Suitable for temperature sensing in laboratory equipment and machinery, in refrigeration and air conditioning applications, in air quality control applications, in heating applications, in the field of renewable energy and in the food field.



TECHNICAL DATA

TEMPERATURE RANGE	(-50 +250)°C
MODEL	With connector
SENSOR	NTC
CAPSULE	Diameter 4x40 mm
CABLE	Teflon
TERMINATIONS	Tin-plated, tips, connectors (other terminations available on request)
RESPONSE TIME	10 s in non-static liquid at 63.2% (depends on configuration)
IDENTIFICATION	Laser on cable, label (customizable)
DECLARATIONS OF CONFORMITY	CE MARKING, CONFLICT MINERALS, REACH, REACH, ROHS

RT002C

PROBES WITH STANDARD METAL CAPSULE

PRODUCT FAMILY 15CA05

Probe with steel capsule, NTC sensor, in Teflon cable, diameter 4x40 mm capsule. Suitable for temperature sensing in refrigeration and air conditioning applications, in air quality control applications, in heating applications, in the field of renewable energy and in the food field.



TECHNICAL DATA

TEMPERATURE RANGE	(-50 +250)°C
MODEL	Steel capsule
SENSOR	NTC
CAPSULE	Diameter 4x40 mm
CABLE	Teflon
TERMINATIONS	Tin-plated, tips, connectors (other terminations available on request)
RESPONSE TIME	10 s in non-static liquid at 63.2% (depends on configuration)
IDENTIFICATION	Laser on cable, label (customizable)
DECLARATIONS OF CONFORMITY	CE MARKING, CONFLICT MINERALS, MOCA, REACH, REACH, ROHS

RTU03C**PROBES WITH FAST METAL CAPSULE****PRODUCT FAMILY 15CA10**

Probe with steel capsule, NTC sensor, in Teflon cable, diameter 4x40 mm capsule. Suitable for temperature sensing in refrigeration and air conditioning applications, in air quality control applications, in heating applications, in the field of renewable energy and in the food field.

**TECHNICAL DATA**

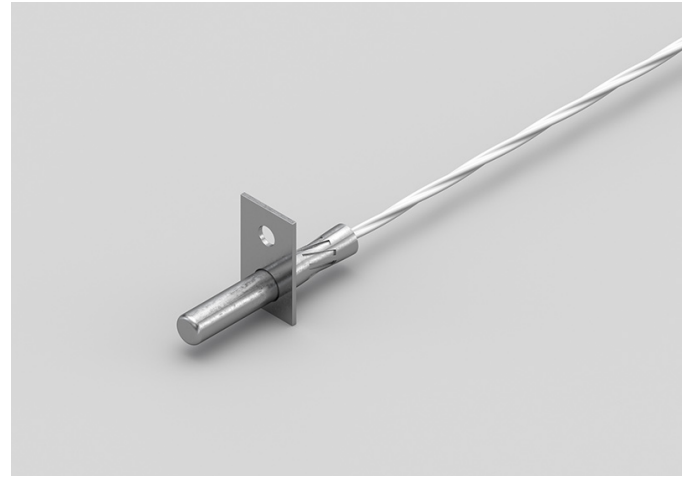
TEMPERATURE RANGE	(-50 +250)°C
MODEL	Steel capsule
SENSOR	NTC
CAPSULE	Diameter 4x40 mm
CABLE	Teflon
TERMINITIONS	Tin-plated, tips, connectors (other terminations available on request)
RESPONSE TIME	10 s in non-static liquid at 63.2% (depends on configuration)
IDENTIFICATION	Laser on cable, label (customizable)
DECLARATIONS OF CONFORMITY	CE MARKING, CONFLICT MINERALS, MOCA, REACH, REACH, ROHS

RTU05C

PROBES WITH FAST METAL CAPSULE

PRODUCT FAMILY 15CA10

Probe with steel capsule, NTC sensor, in Teflon cable, diameter 4x40 mm capsule. Suitable for temperature sensing in refrigeration and air conditioning applications, in air quality control applications, in heating applications, in the field of renewable energy and in the food field.

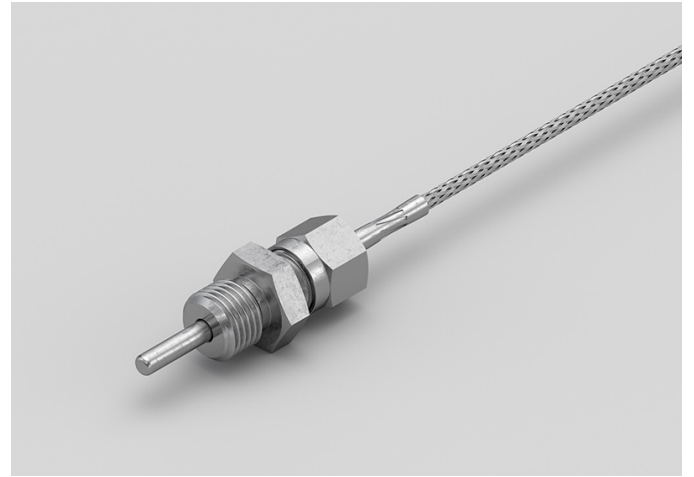


TECHNICAL DATA

TEMPERATURE RANGE	(-50 +250)°C
MODEL	Steel capsule
SENSOR	NTC
CAPSULE	Diameter 4x40 mm
CABLE	Teflon
TERMINATIONS	Tin-plated, tips, connectors (other terminations available on request)
RESPONSE TIME	10 s in non-static liquid at 63.2% (depends on configuration)
IDENTIFICATION	Laser on cable, label (customizable)
DECLARATIONS OF CONFORMITY	CE MARKING, CONFLICT MINERALS, MOCA, REACH, REACH, ROHS

RVM01C**METAL CAPSULE PROBES
WITH FLANGE****PRODUCT FAMILY 15CA25**

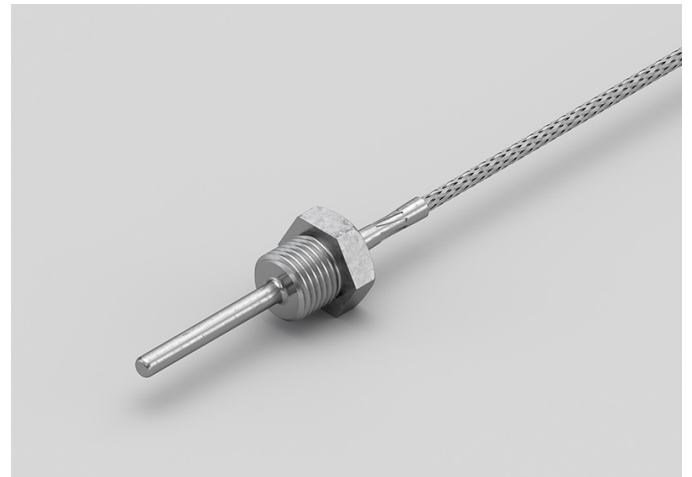
Contact probe with NTC sensor, in glass fibre cable, diameter 4x40 mm capsule. Suitable for temperature sensing in laboratory equipment and machinery, in refrigeration and air conditioning applications, in air quality control applications, in heating applications, in the field of renewable energy and in the food field.

**TECHNICAL DATA**

TEMPERATURE RANGE	(0 +300)°C
MODEL	Contact
SENSOR	NTC
CAPSULE	Diameter 4x40 mm
CABLE	Glass fibre
TERMINATIONS	Tin-plated, tips, connectors (other terminations available on request)
RESPONSE TIME	10 s in non-static liquid at 63.2% (depends on configuration)
IDENTIFICATION	Laser on cable, label (customizable)
DECLARATIONS OF CONFORMITY	CE MARKING, CONFLICT MINERALS, REACH, REACH, ROHS

RVM04C**METAL CAPSULE PROBES
WITH FLANGE****PRODUCT FAMILY 15CA25**

Contact probe with NTC sensor, in glass fibre cable, diameter 4x40 mm capsule. Suitable for temperature sensing in laboratory equipment and machinery, in refrigeration and air conditioning applications, in air quality control applications, in heating applications, in the field of renewable energy and in the food field.

**TECHNICAL DATA**

TEMPERATURE RANGE	(0 +300)°C
MODEL	Contact
SENSOR	NTC
CAPSULE	Diameter 4x40 mm
CABLE	Glass fibre
TERMINITIONS	Tin-plated, tips, connectors (other terminations available on request)
RESPONSE TIME	10 s in non-static liquid at 63.2% (depends on configuration)
IDENTIFICATION	Laser on cable, label (customizable)
DECLARATIONS OF CONFORMITY	CE MARKING, CONFLICT MINERALS, REACH, REACH, ROHS

RVO02C

METAL CAPSULE PROBES WITH FLANGE

PRODUCT FAMILY 15CA25

Contact probe with NTC sensor, in glass fibre cable, diameter 4x40 mm capsule. Suitable for temperature sensing in refrigeration and air conditioning applications, in air quality control applications, in heating applications, in the field of renewable energy and in the food field.



TECHNICAL DATA

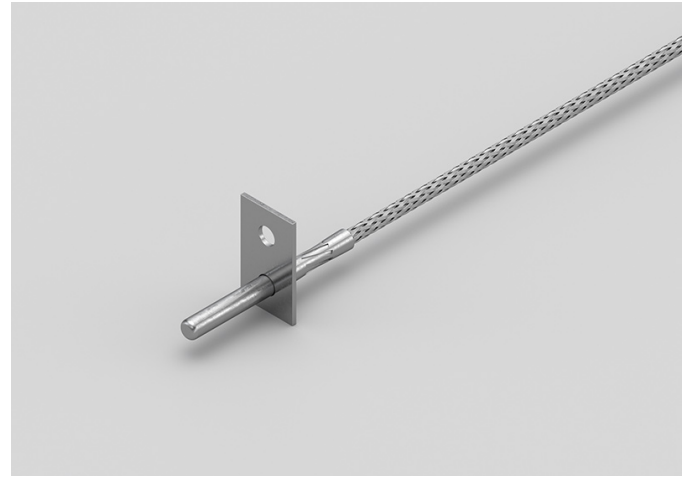
TEMPERATURE RANGE	(0 +300)°C
MODEL	Contact
SENSOR	NTC
CAPSULE	Diameter 4x40 mm
CABLE	Glass fibre
TERMINITIONS	Tin-plated, tips, connectors (other terminations available on request)
RESPONSE TIME	10 s in non-static liquid at 63.2% (depends on configuration)
IDENTIFICATION	Laser on cable, label (customizable)
DECLARATIONS OF CONFORMITY	CE MARKING, CONFLICT MINERALS, REACH, REACH, ROHS

RVU02C

PROBES WITH FAST METAL CAPSULE

PRODUCT FAMILY 15CA10

Probe with steel capsule, NTC sensor, in glass fibre cable, diameter 4x40 mm capsule. Suitable for temperature sensing in refrigeration and air conditioning applications, in air quality control applications, in heating applications, in the field of renewable energy and in the food field.



TECHNICAL DATA

TEMPERATURE RANGE	(0 +300)°C
MODEL	Steel capsule
SENSOR	NTC
CAPSULE	Diameter 4x40 mm
CABLE	Glass fibre
TERMINITIONS	Tin-plated, tips, connectors (other terminations available on request)
RESPONSE TIME	10 s in non-static liquid at 63.2% (depends on configuration)
IDENTIFICATION	Laser on cable, label (customizable)
DECLARATIONS OF CONFORMITY	CE MARKING, CONFLICT MINERALS, MOCA, REACH, REACH, ROHS



SACET S.R.L.
Via del Candela, 55/D
32100 Belluno (BL) Italy

C.F. E P.I. 00654590256

PHONE NUMBER +39 0437 33166

EMAIL info@sacet-probes.com